

SEPT1 Polyclonal Antibody

catalog number: E-AB-52732

Note: Centrifuge before opening to ensure complete recovery of vial contents.

Description

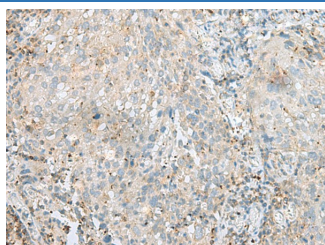
Reactivity	Human;Mouse;Rat
Immunogen	Fusion protein of human SEPT1
Host	Rabbit
Isotype	IgG
Purification	Antigen affinity purification
Conjugation	Unconjugated
buffer	Phosphate buffered solution, pH 7.4, containing 0.05% stabilizer and 50% glycerol.

Applications

Recommended Dilution

IHC	1:40-1:200
------------	------------

Data



Immunohistochemistry of paraffin-embedded Human cervical cancer tissue using SEPT1 Polyclonal Antibody at dilution of 1:60(\times 200)

Preparation & Storage

Storage	Store at -20°C Valid for 12 months. Avoid freeze / thaw cycles.
Shipping	The product is shipped with ice pack,upon receipt,store it immediately at the temperature recommended.

Background

This gene is a member of the septin family of GTPases. Members of this family are required for cytokinesis and the maintenance of cellular morphology. This gene encodes a protein that can form homo- and heterooligomeric filaments, and may contribute to the formation of neurofibrillary tangles in Alzheimer's disease. Alternatively spliced transcript variants have been found but the full-length nature of these variants has not been determined. SEPT1 (Septin 1) is a Protein Coding gene. Among its related pathways are Aurora B signaling and Bacterial invasion of epithelial cells. GO annotations related to this gene include GTP binding and GTPase activity. An important paralog of this gene is SEPT4.

For Research Use Only