

CLEC9A Polyclonal Antibody

Catalog Number: E-AB-53368



Note: Centrifuge before opening to ensure complete recovery of vial contents.

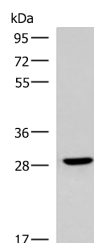
Description

Reactivity	Human
Immunogen	Synthetic peptide of human CLEC9A
Host	Rabbit
Isotype	IgG
Purification	Antigen affinity purification
Conjugation	Unconjugated
Formulation	PBS with 0.05% NaN ₃ and 40% Glycerol, pH7.4

Applications Recommended Dilution

WB	1:500-1:2000
ELISA	1:5000-1:10000

Data



Western blot analysis of Human fetal brain tissue lysate using CLEC9A Polyclonal Antibody at dilution of 1:800

Observed MW: Refer to figures
Calculated Mw: 27 kDa

Preparation & Storage

Storage Store at -20°C. Avoid freeze / thaw cycles.

Background

CLEC9A is a group V C-type lectin-like receptor (CTLR) that functions as an activation receptor and is expressed on myeloid lineage cells. Flow cytometric, Western blot, and deglycosylation analyses showed surface expression of a glycosylated CLEC9A dimer of 40 and 45 kD under reducing conditions. The deglycosylated dimer was approximately 30 and 35 kD. RT-PCR detected CLEC9A expression in most human tissues examined, with highest levels in brain, thymus, and spleen.

For Research Use Only

A Reliable Research Partner in Life Science and Medicine

Toll-free: 1-888-852-8623

Web: www.elabscience.com

Tel: 1-832-243-6086

Email: techsupport@elabscience.com

Fax: 1-832-243-6017