

SEC16B Polyclonal Antibody

catalog number: **E-AB-90923**

Note: Centrifuge before opening to ensure complete recovery of vial contents.

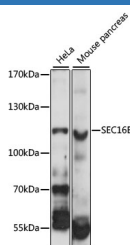
Description

Reactivity	Human;Mouse
Immunogen	Recombinant fusion protein of human SEC16B
Host	Rabbit
Isotype	IgG
Purification	Affinity purification
Buffer	Phosphate buffered solution, pH 7.4, containing 0.05% stabilizer and 50% glycerol.

Applications

WB	1:500-1:2000
-----------	--------------

Data



Western blot analysis of extracts of various cell lines using
SEC16B Polyclonal Antibody at 1:1000 dilution.

Observed-MV:117 kDa

Calculated-MV:59 kDa/70 kDa/116 kDa

Preparation & Storage

Storage	Store at -20°C Valid for 12 months. Avoid freeze / thaw cycles.
Shipping	The product is shipped with ice pack,upon receipt,store it immediately at the temperature recommended.

Background

SEC16B is a mammalian homolog of *S. cerevisiae* Sec16 that is required for organization of transitional endoplasmic reticulum (ER) sites and protein export (Bhattacharyya and Glick, 2007 [PubMed 17192411]).[supplied by OMIM, Jun 2009]

For Research Use Only