

## SPI1 Polyclonal Antibody

**catalog number: E-AB-52113**

**Note:** Centrifuge before opening to ensure complete recovery of vial contents.

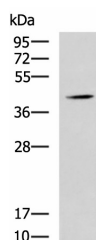
### Description

<b>Reactivity</b>	Human;Mouse;Rat
<b>Immunogen</b>	Synthetic peptide of human SPI1
<b>Host</b>	Rabbit
<b>Isotype</b>	IgG
<b>Purification</b>	Antigen affinity purification
<b>Buffer</b>	Phosphate buffered solution, pH 7.4, containing 0.05% stabilizer and 50% glycerol.

### Applications Recommended Dilution

<b>WB</b>	1:500-1:2000
-----------	--------------

### Data



Western blot analysis of Mouse liver tissue lysate using SPI1  
Polyclonal Antibody at dilution of 1:1600

**Observed-MW:Refer to figures**

**Calculated-MW:31 kDa**

### Preparation & Storage

<b>Storage</b>	Store at -20°C Valid for 12 months. Avoid freeze / thaw cycles.
<b>Shipping</b>	The product is shipped with ice pack,upon receipt,store it immediately at the temperature recommended.

### Background

SPI1 encodes an ETS-domain transcription factor that activates gene expression during myeloid and B-lymphoid cell development. The nuclear protein binds to a purine-rich sequence known as the PU-box found near the promoters of target genes, and regulates their expression in coordination with other transcription factors and cofactors. The protein can also regulate alternative splicing of target genes. Multiple transcript variants encoding different isoforms have been found for this gene. SPI1 (Spi-1 Proto-Oncogene) is a Protein Coding gene. Diseases associated with SPI1 include Inflammatory Diarrhea and Interdigitating Dendritic Cell Sarcoma. Among its related pathways are Validated targets of C-MYC transcriptional repression and C-MYB transcription factor network. GO annotations related to this gene include transcription factor activity, sequence-specific DNA binding and RNA binding. An important paralog of this gene is SPIB.

### For Research Use Only