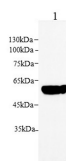


Cortisol Binding Globulin/CBG/SERPINA6 Polyclonal Antibody(Capture/Detector)

catalog number: AN000440P

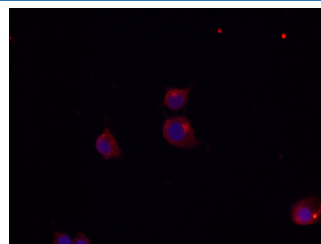
Note: Centrifuge before opening to ensure complete recovery of vial contents.

Description	
Reactivity	Human;Mouse
Immunogen	Recombinant Human Cortisol Binding Globulin/CBG/SERPINA6 SERPINA6 Protein expressed by Mammalian
Host	Rabbit
Isotype	Rabbit IgG
Purification	Antigen Affinity Purification
Conjugation	Unconjugated
Buffer	Phosphate buffered solution, pH 7.2, containing 0.05% proclin 300.
Applications	Recommended Dilution
WB	1:500-1:1000
IF	1:50-1:200
ELISA Capture	2-8 µg/mL
ELISA Detector	0.1-0.4 µg/mL
Data	

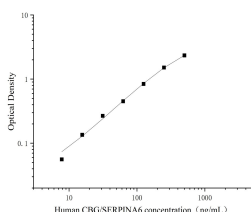


Western Blot with Cortisol Binding Globulin/CBG/SERPINA6 Polyclonal Antibody at dilution of 1:500. Lane 1: Human plasma

Observed-MV: 60 kDa
Calculated-MV: 45 kDa



Immunofluorescence analysis of NIH-3T3 cells using Cortisol Binding Globulin/CBG/SERPINA6 Polyclonal Antibody at dilution of 1:200



Sandwich ELISA-Recombinant Human Cortisol Binding Globulin/CBG/SERPINA6 SERPINA6 Protein standard curve. Background subtracted standard curve using Cortisol Binding Globulin/CBG/SERPINA6 antibody(AN000440P) (Capture), Cortisol Binding Globulin/CBG/SERPINA6 antibody(AN000440P)(Detector) in sandwich ELISA. The reference range value for Recombinant Human Cortisol Binding Globulin/CBG/SERPINA6 SERPINA6 Protein is 7.81-500ng/mL.

Preparation & Storage

Storage	Store at 4°C valid for 12 months or -20°C valid for long term storage, avoid freeze / thaw cycles.
Shipping	The product is shipped with ice pack, upon receipt, store it immediately at the temperature recommended.

Background

Corticosteroid-binding globulin (CBG), also known as SerpinA6, is a non-inhibitory member of the serine proteinase inhibitor (serpin) superfamily. It is the high-affinity transport protein for glucocorticoids in vertebrate blood. CBG is specifically cleaved by this protease at a precise site close to its carboxy-terminus. This induces a conformation change and disrupts the binding between glucocorticoids and CBG, and promotes a significant and local release of glucocorticoids (over 90% of them are bound to CBG in human plasma). In this context, CBG directs glucocorticoids to sites of inflammation, and plays in consequence a crucial role in efficient glucocorticoid action in physiology. The SerpinA6 protein is mainly secreted by the liver. This negative acute phase protein regulates free cortisol levels in the blood and distributes cortisol to its target tissues. SerpinA6 deficiency is an extremely rare hereditary disorder characterized by reduced corticosteroid-binding capacity with normal or low plasma corticosteroid-binding globulin concentration, and normal or low basal cortisol levels associated with hypo-/hypertension and muscle fatigue. There are three heritable, human CBG gene mutations that can reduce CBG-cortisol binding affinity and/or reduce circulating CBG levels.