

# MICU1 Polyclonal Antibody

catalog number: E-AB-52519

**Note:** Centrifuge before opening to ensure complete recovery of vial contents.

## Description

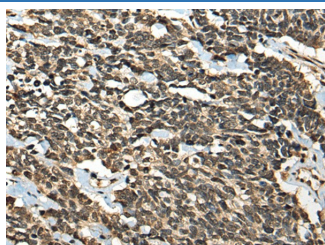
|                     |                                                                                    |
|---------------------|------------------------------------------------------------------------------------|
| <b>Reactivity</b>   | Human;Mouse;Rat                                                                    |
| <b>Immunogen</b>    | Fusion protein of human MICU1                                                      |
| <b>Host</b>         | Rabbit                                                                             |
| <b>Isotype</b>      | IgG                                                                                |
| <b>Purification</b> | Antigen affinity purification                                                      |
| <b>Conjugation</b>  | Unconjugated                                                                       |
| <b>buffer</b>       | Phosphate buffered solution, pH 7.4, containing 0.05% stabilizer and 50% glycerol. |

## Applications

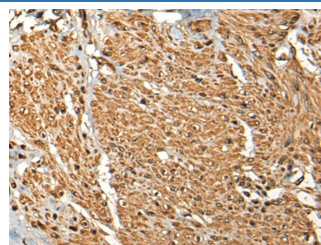
## Recommended Dilution

|            |            |
|------------|------------|
| <b>IHC</b> | 1:30-1:150 |
|------------|------------|

## Data



Immunohistochemistry of paraffin-embedded Human lung cancer tissue using MICU1 Polyclonal Antibody at dilution of 1:35(×200)



Immunohistochemistry of paraffin-embedded Human prostate cancer tissue using MICU1 Polyclonal Antibody at dilution of 1:35(×200)

## Preparation & Storage

|                 |                                                                                                          |
|-----------------|----------------------------------------------------------------------------------------------------------|
| <b>Storage</b>  | Store at -20°C Valid for 12 months. Avoid freeze / thaw cycles.                                          |
| <b>Shipping</b> | The product is shipped with ice pack, upon receipt, store it immediately at the temperature recommended. |

## Background

This gene encodes an essential regulator of mitochondrial Ca<sup>2+</sup> uptake under basal conditions. The encoded protein interacts with the mitochondrial calcium uniporter, a mitochondrial inner membrane Ca<sup>2+</sup> channel, and is essential in preventing mitochondrial Ca<sup>2+</sup> overload, which can cause excessive production of reactive oxygen species and cell stress. Alternatively spliced transcript variants encoding different isoforms have been described.

MICU1 (Mitochondrial Calcium Uptake 1) is a Protein Coding gene. Diseases associated with MICU1 include Myopathy With Extrapyramidal Signs and Fish Allergy. Among its related pathways are Ca, cAMP and Lipid Signaling. GO annotations related to this gene include calcium ion binding and protein heterodimerization activity. An important paralog of this gene is MICU3.

## For Research Use Only