

# Dimethyl-Lysine Polyclonal Antibody

catalog number: E-AB-40541

**Note:** Centrifuge before opening to ensure complete recovery of vial contents.

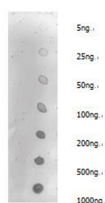
## Description

<b>Reactivity</b>	Human;Mouse;E.coli
<b>Immunogen</b>	Dimethyl Protein
<b>Host</b>	Rabbit
<b>Isotype</b>	IgG
<b>Purification</b>	Antigen Affinity Purification
<b>Conjugation</b>	Unconjugated
<b>buffer</b>	PBS with 0.05% proclin 300, 1% protective protein and 50% glycerol,pH7.4

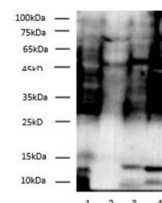
## Applications

Applications	Recommended Dilution
<b>WB</b>	1:1000-2000
<b>Dot</b>	Blot 1:2000

## Data



Dot blotting analysis of anti-Dimethyl-Lysine polyclonal antibody on unmodified BSA and dimethyl BSA at dilution of 1:2000.



Western blotting of Dimethyl-Lysine polyclonal antibody at dilution of 1:500. Lane 1: E.coli, Lane 2: Mouse Thymus, Lane 3: Mouse Brain, Lane 4: Hela cell lysates.

## Preparation & Storage

<b>Storage</b>	Store at -20°C Valid for 12 months. Avoid freeze / thaw cycles.
<b>Shipping</b>	The product is shipped with ice pack,upon receipt,store it immediately at the temperature recommended.

## Background

In proteins, lysine residue can be methylated once, twice or thrice on its terminal sidechain ammonium group. Such methylated lysines play an important role in epigenetics; the methylation of specific lysines of certain histones in a nucleosome al

## For Research Use Only