

Recombinant Human LBP Protein (His Tag)

Catalog Number: PKSH033414

Note: Centrifuge before opening to ensure complete recovery of vial contents.

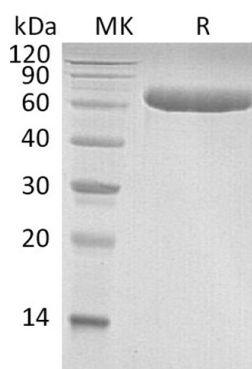
Description

Species	Human
Source	HEK293 Cells-derived Human LBP protein Ala26-Val481, with an C-terminal His
Calculated MW	52.0 kDa
Observed MW	64 kDa
Accession	P18428
Bio-activity	Not validated for activity

Properties

Purity	> 95 % as determined by reducing SDS-PAGE.
Endotoxin	< 1.0 EU per µg of the protein as determined by the LAL method.
Storage	Generally, lyophilized proteins are stable for up to 12 months when stored at -20 to -80 °C. Reconstituted protein solution can be stored at 4-8°C for 2-7 days. Aliquots of reconstituted samples are stable at < -20°C for 3 months.
Shipping	This product is provided as lyophilized powder which is shipped with ice packs.
Formulation	Lyophilized from a 0.2 µm filtered solution of 20mM Tris-HCl, 500mM NaCl, 1mM EDTA, pH 8.0. Normally 5% - 8% trehalose, mannitol and 0.01% Tween 80 are added as protectants before lyophilization. Please refer to the specific buffer information in the printed manual.
Reconstitution	Please refer to the printed manual for detailed information.

Data



> 95 % as determined by reducing SDS-PAGE.

Background

Lipopolysaccharide binding protein (LBP) is a plasma protein, belongs to a member of structurally and functionally related proteins which includes bactericidal permeability-increasing protein (BPI), plasma cholesteryl ester transfer protein (CETP) and phospholipid transfer protein (PLTP). It is involved in the acute-phase immunologic response to gram-negative bacterial infections. In cooperation with BPI, LBP binds LPS and interacts with the CD14 receptor, most likely playing a role in regulating LPS-dependent monocyte responses. Studies suggest that LBP is necessary for the rapid acute-phase response to LPS but not for the clearance of LPS from circulation. Finally, the LBP gene is found on chromosome 20, directly downstream of the BPI gene.

For Research Use Only