

## Recombinant Human TEM8/ATR Protein (His Tag)

Catalog Number: PKSH033297

**Note:** Centrifuge before opening to ensure complete recovery of vial contents.

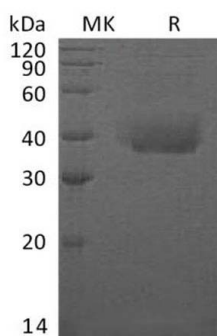
### Description

|                      |  |
|----------------------|--|
| <b>Species</b>       | Human  |
| <b>Source</b>        | HEK293 Cells-derived Human TEM8/ATR protein Glu33-Lys321, with an C-terminal His |
| <b>Calculated MW</b> | 33.6 kDa   |
| <b>Observed MW</b>   | 35-45 kDa  |
| <b>Accession</b>     | Q9H6X2-4   |
| <b>Bio-activity</b>  | Not validated for activity   |

### Properties

|                       |   |
|-----------------------|---|
| <b>Purity</b>         | > 95 % as determined by reducing SDS-PAGE.  |
| <b>Endotoxin</b>      | < 1.0 EU per µg of the protein as determined by the LAL method.   |
| <b>Storage</b>        | Generally, lyophilized proteins are stable for up to 12 months when stored at -20 to -80°C. Reconstituted protein solution can be stored at 4-8°C for 2-7 days. Aliquots of reconstituted samples are stable at < -20°C for 3 months. |
| <b>Shipping</b>       | This product is provided as lyophilized powder which is shipped with ice packs.   |
| <b>Formulation</b>    | Lyophilized from a 0.2 µm filtered solution of 20mM PB, 150mM NaCl, pH 7.4. Normally 5% - 8% trehalose, mannitol and 0.01% Tween 80 are added as protectants before lyophilization.   |
|                       | Please refer to the specific buffer information in the printed manual.  |
| <b>Reconstitution</b> | Please refer to the printed manual for detailed information.  |

### Data



> 95 % as determined by reducing SDS-PAGE.

### Background

Anthrax Toxin Receptor 1 (ANTXR1) is a single-pass type I membrane protein that belongs to the ATR family. ANTXR1 contains one VWFA domain and binds PA through the VWA domain. ANTXR1 is highly expressed in tumor endothelial cells. ANTXR1 plays a role in cell attachment and migration. ANTXR1 interacts with extracellular matrix proteins and the actin cytoskeleton; it mediates adhesion of cells to type 1 collagen and gelatin; reorganization of the actin cytoskeleton and promotes cell spreading. It is also involved in the angiogenic response of cultured umbilical vein endothelial cells; up-regulated in cultured angiogenic umbilical vein endothelial cells. Defects in ANTXR1 are associated with susceptibility to hemangioma capillary infantile (HCI).

### For Research Use Only

Toll-free: 1-888-852-8623  
Web: [www.elabscience.com](http://www.elabscience.com)

Tel: 1-832-243-6086  
Email: [techsupport@elabscience.com](mailto:techsupport@elabscience.com)

Fax: 1-832-243-6017