

# Luciferase Monoclonal Antibody

Catalog Number:E-AB-22134



**Note:** Centrifuge before opening to ensure complete recovery of vial contents.

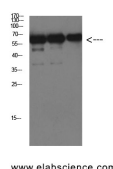
## Description

|                     |  |
|---------------------|--|
| <b>Reactivity</b>   | Firefly  |
| <b>Immunogen</b>    | Recombinant Protein of Luciferase of Luciferase                              |
| <b>Host</b>         | Mouse  |
| <b>Isotype</b>      | IgG  |
| <b>Clone</b>        | Clone:2C2  |
| <b>Purification</b> | Protein A purification   |
| <b>Conjugation</b>  | Unconjugated   |
| <b>Formulation</b>  | PBS with 0.02% sodium azide, 0.5% protective protein and 50% glycerol, pH7.4 |

## Applications Recommended Dilution

|           |             |
|-----------|-------------|
| <b>WB</b> | 1:1000-2000 |
|-----------|-------------|

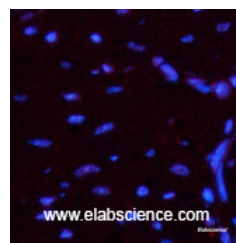
## Data



www.elabscience.com

Western Blot analysis of Luciferase protein using Luciferase Monoclonal Antibody at dilution of 1:1000.

**Observed Mw:60kDa**



www.elabscience.com

Immunofluorescence analysis of Mouse heart tissue using Luciferase Monoclonal Antibody at dilution of 1:200.

## Preparation & Storage

**Storage** Store at -20°C. Avoid freeze / thaw cycles.

## Background

Luciferase from the firefly has become one of the more widely used reporter proteins for the study of gene expression. Luciferase catalyzes a bioluminescent reaction which requires the substrate luciferin as well as  $Mg^{2+}$  and ATP. Mixing these reagents with the cell extract containing luciferase, results in a flash of light that decays rapidly. This light can be detected by a luminometer. The total light emission is proportional to the luciferase activity of the sample.

## For Research Use Only

A Reliable Research Partner in Life Science and Medicine

Toll-free: 1-888-852-8623

Web: [www.elabscience.com](http://www.elabscience.com)

Tel: 1-832-243-6086

Email: [techsupport@elabscience.com](mailto:techsupport@elabscience.com)

Fax: 1-832-243-6017