

ILK Polyclonal Antibody

Catalog Number: E-AB-14157



Note: Centrifuge before opening to ensure complete recovery of vial contents.

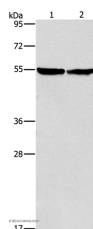
Description

Reactivity	Human, Mouse, Rat
Immunogen	Recombinant protein of human ILK
Host	Rabbit
Isotype	IgG
Purification	Affinity purification
Conjugation	Unconjugated
Formulation	PBS with 0.05% sodium azide and 50% glycerol, PH7.4

Applications Recommended Dilution

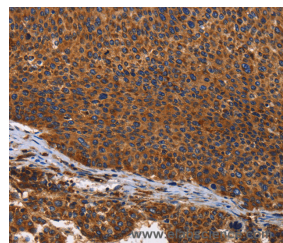
WB	1:500-1:2000
IHC	1:100-1:300

Data

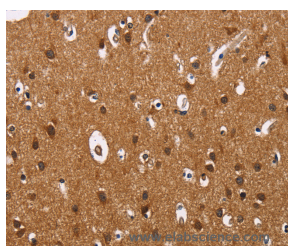


Western Blot analysis of Mouse heart tissue and hela cell using ILK Polyclonal Antibody at dilution of 1:600

Calculated Mw: 51kDa



Immunohistochemistry of paraffin-embedded Human liver cancer using ILK Polyclonal Antibody at dilution of 1:60



Immunohistochemistry of paraffin-embedded Human brain using ILK Polyclonal Antibody at dilution of 1:60

Preparation & Storage

Storage Store at -20°C. Avoid freeze / thaw cycles.

Background

This gene encodes a protein with a kinase-like domain and four ankyrin-like repeats. The encoded protein associates at the cell membrane with the cytoplasmic domain of beta integrins, where it regulates integrin-mediated signal transduction. Activity of this protein is important in the epithelial to mesenchymal transition, and over-expression of this gene is

For Research Use Only

A Reliable Research Partner in Life Science and Medicine

Toll-free: 1-888-852-8623

Web: www.elabscience.com

Tel: 1-832-243-6086

Email: techsupport@elabscience.com

Fax: 1-832-243-6017

ILK Polyclonal Antibody

Catalog Number: E-AB-14157



implicated in tumor growth and metastasis. Alternative splicing results in multiple transcript variants.

For Research Use Only

A Reliable Research Partner in Life Science and Medicine

Toll-free: 1-888-852-8623

Tel: 1-832-243-6086

Fax: 1-832-243-6017

Web: www.elabscience.com

Email: techsupport@elabscience.com