

KLK9 Polyclonal Antibody

catalog number: E-AB-18152

Note: Centrifuge before opening to ensure complete recovery of vial contents.

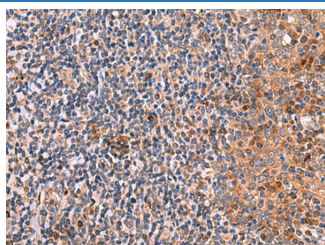
Description

Reactivity	Human
Immunogen	Synthetic peptide of human KLK9
Host	Rabbit
Isotype	IgG
Purification	Antigen affinity purification
Conjugation	Unconjugated
buffer	Phosphate buffered solution, pH 7.4, containing 0.05% stabilizer and 50% glycerol.

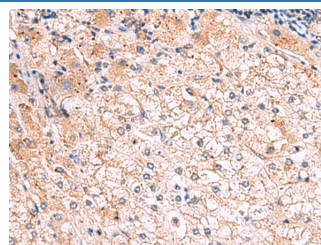
Applications

Applications	Recommended Dilution
IHC	1:40-1:200

Data



Immunohistochemistry of paraffin-embedded Human tonsil tissue using KLK9 Polyclonal Antibody at dilution of 1:50(×200)



Immunohistochemistry of paraffin-embedded Human liver cancer tissue using KLK9 Polyclonal Antibody at dilution of 1:50(×200)

Preparation & Storage

Storage	Store at -20°C Valid for 12 months. Avoid freeze / thaw cycles.
Shipping	The product is shipped with ice pack, upon receipt, store it immediately at the temperature recommended.

Background

The protein encoded by this gene is a kallikrein-related serine protease. This gene is activated by steroid hormones in a human breast cancer cell line, making it a good marker for cancer detection. The encoded protein is found primarily in the cytoplasm.

For Research Use Only