

# Recombinant Rat PCSK9 protein (His Tag)

Catalog Number: PDMR100033

**Note:** Centrifuge before opening to ensure complete recovery of vial contents.

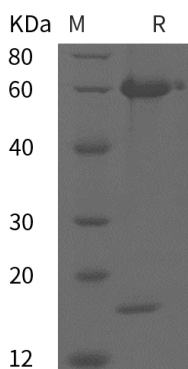
## Description

<b>Species</b>	Rat
<b>Mol_Mass</b>	75.9 kDa
<b>Accession</b>	P59996
<b>Bio-activity</b>	Not validated for activity

## Properties

<b>Purity</b>	> 95% as determined by reducing SDS-PAGE.
<b>Endotoxin</b>	< 1.0 EU/mg of the protein as determined by the LAL method
<b>Storage</b>	Generally, lyophilized proteins are stable for up to 12 months when stored at -20 to -80 °C. Reconstituted protein solution can be stored at 4-8°C for 2-7 days. Aliquots of reconstituted samples are stable at < -20°C for 3 months.
<b>Shipping</b>	This product is provided as lyophilized powder which is shipped with ice packs.
<b>Formulation</b>	Lyophilized from a 0.2 µm filtered solution in PBS with 5% Trehalose and 5% Mannitol.
<b>Reconstitution</b>	It is recommended that sterile water be added to the vial to prepare a stock solution of 0.5 mg/mL. Concentration is measured by UV-Vis.

## Data



> 95 % as determined by reducing SDS-PAGE.

## Background

Proprotein convertase subtilisin/kexin type 9 (PCSK9), also known as NARCI (neural apoptosis regulated convertase), which is a newly identified human secretory subtilase belonging to the proteinase K subfamily of the secretory subtilase family. PCSK9 protein is an enzyme which in humans is encoded by the PCSK9 gene with orthologs found across many species. It is expressed in neuroepithelioma, colon carcinoma, hepatic and pancreatic cell lines, and in Schwann cells. PCSK9 protein is highly expressed in the liver and regulates low density lipoprotein receptor (LDLR) protein levels. Inhibition of PCSK9 protein function is currently being explored as a means of lowering cholesterol levels. Thereby, PCSK9 protein is regarded as a new strategy to treat hypercholesterolemia. PCSK9 protein contributes to cholesterol homeostasis and may have a role in the differentiation of cortical neurons.

## For Research Use Only