

## Purified Anti-Human CD48 Antibody[BJ40]

catalog number: AN009400P

**Note:** Centrifuge before opening to ensure complete recovery of vial contents.

### Description

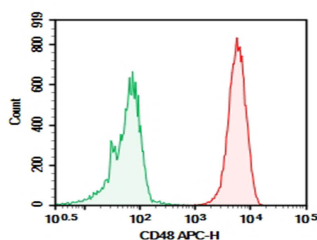
|                     |   |
|---------------------|---|
| <b>Reactivity</b>   | Human   |
| <b>Immunogen</b>    | Recombinant Human CD48 protein  |
| <b>Host</b>         | Mouse   |
| <b>Isotype</b>      | Mouse IgG2b, κ  |
| <b>Clone</b>        | BJ40  |
| <b>Purification</b> | >98%, Protein A/G purified  |
| <b>Buffer</b>       | Phosphate-buffered solution, pH 7.2, containing 0.05% non-protein stabilizer.<br>Dialyze to completely remove the stabilizer prior to labeling. |

### Applications

### Recommended Dilution

|            |  |
|------------|--|
| <b>FCM</b> | 2 µg/mL (0.5×10 <sup>6</sup> -1×10 <sup>6</sup> cells) |
|------------|--|

### Data



Human peripheral blood lymphocytes were stained with 0.2 µg Purified Anti-Human CD48 Antibody[BJ40] (Right) and 0.2 µg Mouse IgG2b, κ Isotype Control (Left), followed by APC-conjugated Goat Anti-Mouse IgG Secondary Antibody.

### Preparation & Storage

|                 |  |
|-----------------|--|
| <b>Storage</b>  | Store at 4°C valid for 12 months or -20°C valid for long term storage, avoid freeze / thaw cycles. |
| <b>Shipping</b> | Ice bag  |

### Background

This gene encodes a member of the CD2 subfamily of immunoglobulin-like receptors which includes SLAM (signaling lymphocyte activation molecules) proteins. The encoded protein is found on the surface of lymphocytes and other immune cells, dendritic cells and endothelial cells, and participates in activation and differentiation pathways in these cells. The encoded protein does not have a transmembrane domain, however, but is held at the cell surface by a GPI anchor via a C-terminal domain which maybe cleaved to yield a soluble form of the receptor. Multiple transcript variants encoding different isoforms have been found for this gene.

### For Research Use Only