

MAA Lysine Polyclonal Antibody

catalog number: E-AB-40543

Note: Centrifuge before opening to ensure complete recovery of vial contents.

Description

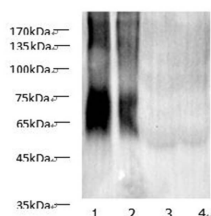
Reactivity	All
Immunogen	MAA protein
Host	Rabbit
Isotype	IgG
Purification	Antigen Affinity Purification
Conjugation	Unconjugated
buffer	PBS with 0.05% proclin 300, 1% protective protein and 50% glycerol,pH7.4

Applications

Recommended Dilution

WB 1:1000-2000

Data



Western blot of anti-MAA Lysine Polyclonal Antibody at dilution of 1:1000. Lane 1: MAA-HSA (10ug/lane) Lane 2: MAA- HSA (5ug/lane), Lane 3: HSA (10ug/lane), Lane 4: HSA (5ug/lane).

Preparation & Storage

Storage	Store at -20°C Valid for 12 months. Avoid freeze / thaw cycles.
Shipping	The product is shipped with ice pack,upon receipt,store it immediately at the temperature recommended.

Background

Malondialdehyde (MDA) and acetaldehyde (AA) react synergistically to form hybrid malondialdehyde–acetaldehyde (MAA) adducts . MAA adducts are unique among aldehyde–protein adducts in their stability, potent immunogenicity, ability to alter protein regulat

For Research Use Only