

TTR Polyclonal Antibody

catalog number: E-AB-18211

Note: Centrifuge before opening to ensure complete recovery of vial contents.

Description

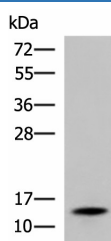
Reactivity	Human;Mouse;Rat
Immunogen	Fusion protein of human TTR
Host	Rabbit
Isotype	IgG
Purification	Antigen affinity purification
Conjugation	Unconjugated
buffer	Phosphate buffered solution, pH 7.4, containing 0.05% stabilizer and 50% glycerol.

Applications

Recommended Dilution

WB	1:500-1:2000
IHC	1:50-1:200

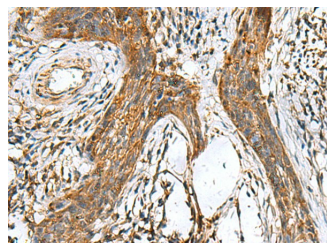
Data



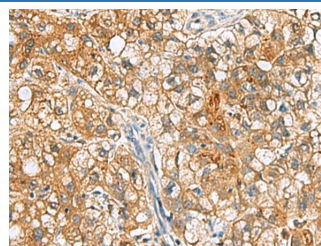
Western blot analysis of Mouse serum using TTR Polyclonal Antibody at dilution of 1:600

Observed-MV: Refer to figures

Calculated-MV: 16 kDa



Immunohistochemistry of paraffin-embedded Human esophagus cancer tissue using TTR Polyclonal Antibody at dilution of 1:50(x200)



Immunohistochemistry of paraffin-embedded Human liver cancer tissue using TTR Polyclonal Antibody at dilution of 1:50(x200)

Preparation & Storage

Storage	Store at -20°C Valid for 12 months. Avoid freeze / thaw cycles.
Shipping	The product is shipped with ice pack, upon receipt, store it immediately at the temperature recommended.

Background

For Research Use Only

TTR Polyclonal Antibody

catalog number: E-AB-18211



Transthyretin (TTR) is a plasma transport protein for thyroxine and retinol, through the association with retinol-binding protein. It is a homotetrameric protein synthesized mainly in liver, choroid plexus, retinal pigment epithelium, and pancreas. Within the CNS, TTR is the only known protein synthesized solely by the choroid plexus. Mutant and wildtype TTR give rise to various forms of amyloid deposition (amyloidosis). Defects in TTR are the cause of amyloidosis transthyretin-related (AMYLTTR), hyperthyroxinemia dystansthyretinemic euthyroidal (HTDE) and carpal tunnel syndrome type 1 (CTS1). In addition, positive immunostaining for TTR has been reported as a sensitive diagnostic marker of choroid plexus tumors. (22103483)

For Research Use Only

A Reliable Research Partner in Life Science and Medicine
Tel: 400-999-2100

Email: techsupport@elabscience.cn

Web: www.elabscience.cn

Rev. V1.7