

HRP-conjugated Lamin A/C Monoclonal Antibody

catalog number: AN00298HP



Note: Centrifuge before opening to ensure complete recovery of vial contents.

Description

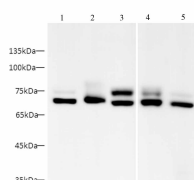
Reactivity	Human
Immunogen	Recombinant human Lamin A/C protein expressed by E.coli
Host	Mouse
Isotype	IgG1
Clone	4F1
Purification	Protein A/G Purification
Conjugation	HRP
buffer	PBS with 0.05% proclin 300, 1% protective protein and 50% glycerol,pH7.4

Applications

Recommended Dilution

WB	1:2500-1:5000
-----------	---------------

Data



Western blot with HRP-conjugated Lamin A/C Monoclonal

Antibody at dilution of 1:5000.lane 1:HL-60 whole cell lysate,lane 2:U87-MG whole cell lysate,lane 3:HeLa whole cell lysate, lane 4:SH-SY5Y whole cell lysate,lane 5:THP-1 whole cell lysate

Observed-MV:65-70 kDa

Calculated-MV:65 kDa

Preparation & Storage

Storage	Store at -20°C Valid for 12 months. Avoid freeze / thaw cycles. Protected from prolonged exposure to light.
Shipping	The product is shipped with ice pack,upon receipt,store it immediately at the temperature recommended.

Background

Lamin A/C is also named as LMNA,or LMN1. The lamin family of proteins make up the matrix and are highly conserved in evolution. During mitosis,the lamina matrix is reversibly disassembled as the lamin proteins are phosphorylated. Lamin proteins are thought to be involved in nuclear stability,chromatin structure and gene expression. The lack of lamin A/C can be as a novel marker for undifferentiated embryonic stem cells and lamin A/C expression is as an early indicator of differentiation (PMID: 16179429). Mutations in this gene lead to several diseases: Emery-Dreifuss muscular dystrophy, familial partial lipodystrophy,limb girdle muscular dystrophy,dilated cardiomyopathy,Charcot-Marie-Tooth disease,and Hutchinson-Gilford progeria syndrome. This protein has 4 isoforms produced by alternative splicing with the molecular weight of 74 kDa,65 kDa,70 kDa and 64 kDa. This antibody can recognize 4 isoforms of Lamin A/C.

For Research Use Only

A Reliable Research Partner in Life Science and Medicine
Tel: 400-999-2100

Email:techsupport@elabscience.cn

Web:www.elabscience.cn

Rev. V1.4