

## c-Fos Monoclonal Antibody

catalog number: E-AB-70204

**Note:** Centrifuge before opening to ensure complete recovery of vial contents.

### Description

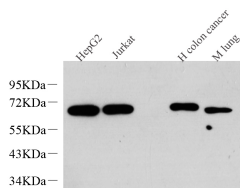
<b>Reactivity</b>	Human;Mouse;Rat
<b>Immunogen</b>	KLH conjugated Synthetic peptide corresponding to Mouse c-FOS
<b>Host</b>	Mouse
<b>Isotype</b>	IgG
<b>Clone</b>	4B4F11
<b>Purification</b>	Affinity purification
<b>Conjugation</b>	Unconjugated
<b>Buffer</b>	Phosphate buffered solution, pH 7.4, containing 0.05% stabilizer, 1% protein protectant and 50% glycerol.

### Applications

### Recommended Dilution

<b>WB</b>	1:500-1:2000
<b>IHC</b>	1:500-1:2000
<b>IF</b>	1:200-1:1000

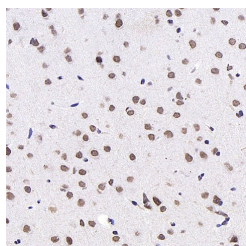
### Data



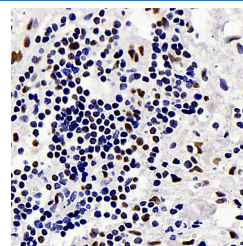
Western Blot analysis of various samples using c-Fos Monoclonal Antibody at dilution of 1:1000.

**Observed-MW:62 kDa**

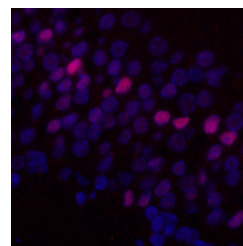
**Calculated-MW:62 kDa**



Immunohistochemistry analysis of paraffin-embedded mouse brain using c-Fos Monoclonal Antibody at dilution of 1:1000.



Immunohistochemistry analysis of paraffin-embedded human gallbladder using c-Fos Monoclonal Antibody at dilution of 1:1000.



Immunofluorescence analysis of paraffin-embedded rat brain using c-Fos Monoclonal Antibody at dilution of 1:400.

### Preparation & Storage

<b>Storage</b>	Store at -20°C Valid for 12 months. Avoid freeze / thaw cycles.
<b>Shipping</b>	The product is shipped with ice pack, upon receipt, store it immediately at the temperature recommended.

### Background

### For Research Use Only

The Fos gene family consists of 4 members: FOS, FOSB, FOSL1, and FOSL2. These genes encode leucine zipper proteins that can dimerize with proteins of the JUN family, thereby forming the transcription factor complex AP-1. As such, the FOS proteins have been implicated as regulators of cell proliferation, differentiation, and transformation. In some cases, expression of the FOS gene has also been associated with apoptotic cell death.