

Recombinant Mouse YM1/ECF-L/Chil3 Protein (Pro105Ser)(His Tag)

Catalog Number: PKSM041348

Note: Centrifuge before opening to ensure complete recovery of vial contents.

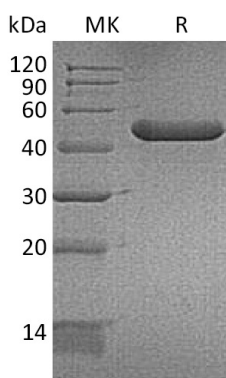
Description

Species	Mouse
Source	HEK293 Cells-derived Mouse YM1/ECF-L/Chil3 protein Tyr22-Tyr398, with an C-terminal His
Calculated MW	43.4 kDa
Observed MW	42-50 kDa
Accession	O35744
Bio-activity	Not validated for activity

Properties

Purity	> 95 % as determined by reducing SDS-PAGE.
Endotoxin	< 1.0 EU per µg of the protein as determined by the LAL method.
Storage	Generally, lyophilized proteins are stable for up to 12 months when stored at -20 to -80 °C. Reconstituted protein solution can be stored at 4-8°C for 2-7 days. Aliquots of reconstituted samples are stable at < -20°C for 3 months.
Shipping	This product is provided as lyophilized powder which is shipped with ice packs.
Formulation	Lyophilized from a 0.2 µm filtered solution of 20mM PB, 6% Sucrose, 2% Glycine, 0.05% Tween 80, pH7.5. Normally 5% - 8% trehalose, mannitol and 0.01% Tween 80 are added as protectants before lyophilization. Please refer to the specific buffer information in the printed manual.
Reconstitution	Please refer to the printed manual for detailed information.

Data



Background

Chitinase 3-like 3 gene, also known as YM1 and ECF-L, encodes a precursor protein with 398 amino acid residues with a 21 residue signal sequence. Chitinase 3-like 3 protein is a lectin that binds saccharides with a free amino group, such as glucosamine or galactosamine. Binding to oligomeric saccharides is much stronger than binding to mono- or disaccharides. Also binds heparin and GlcN oligomers, and is produced primarily by macrophages during inflammation. It has chemotactic activity for T-lymphocytes, bone marrow cells and eosinophils.

For Research Use Only