

Recombinant Human Lacritin/LACRT Protein (His Tag)^{dg}

Catalog Number:PKSH032678

DIA • AN[®]
by Elabscience

Note: Centrifuge before opening to ensure complete recovery of vial contents.

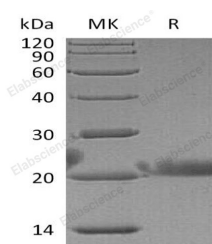
Description

Synonyms	Extracellular Glycoprotein Lacritin;LACRT
Species	Human
Expression Host	E.coli
Sequence	Ala19-Ala138
Accession	Q9GZZ8
Calculated Molecular Weight	14.6 kDa
Observed molecular weight	22-30 kDa
Tag	N-His

Properties

Purity	> 95 % as determined by reducing SDS-PAGE.
Endotoxin	< 1.0 EU per µg of the protein as determined by the LAL method.
Storage	Generally, lyophilized proteins are stable for up to 12 months when stored at -20 to -80°C. Reconstituted protein solution can be stored at 4-8°C for 2-7 days. Aliquots of reconstituted samples are stable at < -20°C for 3 months.
Shipping	This product is provided as lyophilized powder which is shipped with ice packs.
Formulation	Lyophilized from a 0.2 µm filtered solution of 20mM PB, 150mM NaCl, pH 7.4. Normally 5 % - 8 % trehalose, mannitol and 0.01% Tween80 are added as protectants before lyophilization. Please refer to the specific buffer information in the printed man
Reconstitution	Please refer to the printed manual for detailed information.

Data



> 95 % as determined by reducing SDS-PAGE.

Background

Extracellular glycoprotein lacritin (Lacritin) is a secreted protein which consists of 119 amino acids after cleavage of the N-terminal signal peptide and displays several predicted alpha helices, mostly in the C-terminal half. Lacritin is highly expressed in the lacrimal gland, localizes primarily to secretory granules and secretory fluid. Lacritin modulates lacrimal acinar cell secretion, promotes ductal cell proliferation, and stimulates signaling through tyrosine phosphorylation and release of calcium. Lacritin is thus a multifunctional prosecretory mitogen with cell survival activity. Natural or bacterial cleavage of lacritin releases a C-terminal fragment that is bactericidal. Lacritin cell targeting is dependent on the cell surface heparan sulfate proteoglycan syndecan-1 (SDC1). Binding utilizes an enzyme-regulated 'off-on' switch in which active epithelial heparanase (HPSE) cleaves off heparan sulfate to expose a binding site in the N-terminal region of

For Research Use Only

A Reliable Research Partner in Life Science and Medicine

Toll-free: 1-888-852-8623

Web: www.elabscience.com

Tel: 1-832-243-6086

Email: techsupport@elabscience.com

Fax: 1-832-243-6017

Recombinant Human Lacritin/LACRT Protein (His Tag)^{dg}

Catalog Number: PKSH032678

DIA • AN[®]
by Elabscience

syndecan-1's core protein.

For Research Use Only

A Reliable Research Partner in Life Science and Medicine

Toll-free: 1-888-852-8623

Tel: 1-832-243-6086

Fax: 1-832-243-6017

Web: www.elabscience.com

Email: techsupport@elabscience.com