

Recombinant Glutathione Reductase Monoclonal Antibody

Catalog Number:E-AB-81562

Note: Centrifuge before opening to ensure complete recovery of vial contents.

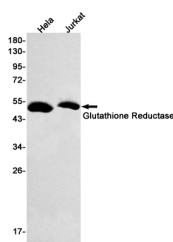
Description

Reactivity	Human
Immunogen	A synthetic peptide of human Glutathione Reductase
Host	Rabbit
Isotype	IgG
Clone	R08-2E4
Purification	Affinity Purified
Conjugation	Unconjugated
Formulation	50mM Tris-Glycine(pH 7.4), 0.15M NaCl, 40% Glycerol, 0.01% Sodium azide and 0.05% protective protein

Applications Recommended Dilution

WB	1:500-1:2000
-----------	--------------

Data



Western blot detection of Glutathione Reductase in HeLa, Jurkat cell lysates using Glutathione Reductase Rabbit mAb(1:500 diluted). Predicted band size: 56kDa. Observed band size: 51kDa.

Observed MW: 51kDa

Calculated Mw: 56kDa

Preparation & Storage

Storage Store at -20°C. Avoid freeze / thaw cycles.

Background

This gene encodes a member of the class-I pyridine nucleotide-disulfide oxidoreductase family. This enzyme is a homodimeric flavoprotein. It is a central enzyme of cellular antioxidant defense, and reduces oxidized glutathione disulfide (GSSG) to the sulfhydryl form GSH, which is an important cellular antioxidant. Rare mutations in this gene result in hereditary glutathione reductase deficiency. Multiple alternatively spliced transcript variants encoding different isoforms have been found.

For Research Use Only

A Reliable Research Partner in Life Science and Medicine

Toll-free: 1-888-852-8623

Web: www.elabscience.com

Tel: 1-832-243-6086

Email: techsupport@elabscience.com

Fax: 1-832-243-6017