

# PBEF/NAMPT Polyclonal Antibody

catalog number: E-AB-40580

**Note:** Centrifuge before opening to ensure complete recovery of vial contents.

## Description

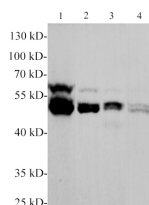
<b>Reactivity</b>	Human;Rat
<b>Immunogen</b>	Recombinant Human PBEF protein expressed by E.coli.
<b>Host</b>	Rabbit
<b>Isotype</b>	IgG
<b>Purification</b>	Antigen Affinity Purification
<b>Conjugation</b>	Unconjugated
<b>buffer</b>	PBS with 0.05% proclin 300, 1% protective protein and 50% glycerol,pH7.4

## Applications

## Recommended Dilution

<b>WB</b>	1:500-1000
-----------	------------

## Data



Western blotting with anti-PBEF polyclonal Antibody at dilution of 1:1000. Lane 1: Raji cell lysates, lane 2: PC-3 cell lysate, lane 3: MCF-7 cell lysate, lane 4: C6 cell lysate.

**Observed-MV:52 kDa**

**Calculated-MV:55 kDa**

## Preparation & Storage

<b>Storage</b>	Store at -20°C Valid for 12 months. Avoid freeze / thaw cycles.
<b>Shipping</b>	The product is shipped with ice pack,upon receipt,store it immediately at the temperature recommended.

## Background

PBEF (pre-B cell colony-enhancing factor), also known as visfatin and nicotinamide phosphoribosyltransferase, is an approximately 52 kDa member of the NAPRTase family of molecules. It functions both intracellularly and extracellularly, where it participates in NAD synthesis and insulin receptor activation, respectively.

## For Research Use Only