

## KCNJ2 Polyclonal Antibody

catalog number: **E-AB-18197**

**Note:** Centrifuge before opening to ensure complete recovery of vial contents.

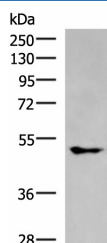
### Description

|                     |  |
|---------------------|--|
| <b>Reactivity</b>   | Human;Mouse;Rat  |
| <b>Immunogen</b>    | Synthetic peptide of human KCNJ2   |
| <b>Host</b>         | Rabbit   |
| <b>Isotype</b>      | IgG  |
| <b>Purification</b> | Antigen affinity purification  |
| <b>Buffer</b>       | Phosphate buffered solution, pH 7.4, containing 0.05% stabilizer and 50% glycerol. |

### Applications

| Applications | Recommended Dilution |
|--------------|----------------------|
| <b>WB</b>    | 1:500-1:2000         |
| <b>IHC</b>   | 1:30-1:150           |

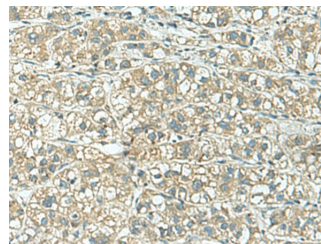
### Data



Western blot analysis of A549 cell lysate using KCNJ2 Polyclonal Antibody at dilution of 1:550

**Observed-MW:Refer to figures**

**Calculated-MW:48 kDa**



Immunohistochemistry of paraffin-embedded Human liver cancer tissue using KCNJ2 Polyclonal Antibody at dilution of 1:25(×200)

### Preparation & Storage

|                 |  |
|-----------------|--|
| <b>Storage</b>  | Store at -20°C Valid for 12 months. Avoid freeze / thaw cycles.  |
| <b>Shipping</b> | The product is shipped with ice pack,upon receipt,store it immediately at the temperature recommended. |

### Background

Potassium channels are present in most mammalian cells, where they participate in a wide range of physiologic responses. The protein encoded by this gene is an integral membrane protein and inward-rectifier type potassium channel. The encoded protein, which has a greater tendency to allow potassium to flow into a cell rather than out of a cell, probably participates in establishing action potential waveform and excitability of neuronal and muscle tissues. Mutations in this gene have been associated with Andersen syndrome, which is characterized by periodic paralysis, cardiac arrhythmias, and dysmorphic features.

### For Research Use Only