

## MAPRE3 Polyclonal Antibody

**catalog number: E-AB-14968**

**Note:** Centrifuge before opening to ensure complete recovery of vial contents.

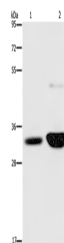
### Description

|                     |                                                                                    |
|---------------------|------------------------------------------------------------------------------------|
| <b>Reactivity</b>   | Human;Mouse;Rat                                                                    |
| <b>Immunogen</b>    | Recombinant protein of human MAPRE3                                                |
| <b>Host</b>         | Rabbit                                                                             |
| <b>Isotype</b>      | IgG                                                                                |
| <b>Purification</b> | Affinity purification                                                              |
| <b>Buffer</b>       | Phosphate buffered solution, pH 7.4, containing 0.05% stabilizer and 50% glycerol. |

### Applications Recommended Dilution

|           |              |
|-----------|--------------|
| <b>WB</b> | 1:500-1:2000 |
|-----------|--------------|

### Data



Western Blot analysis of Human fetal brain and Mouse brain tissue using MAPRE3 Polyclonal Antibody at dilution of 1:500

**Calculated-MW:32 kDa**

### Preparation & Storage

|                 |                                                                                                          |
|-----------------|----------------------------------------------------------------------------------------------------------|
| <b>Storage</b>  | Store at -20°C Valid for 12 months. Avoid freeze / thaw cycles.                                          |
| <b>Shipping</b> | The product is shipped with ice pack, upon receipt, store it immediately at the temperature recommended. |

### Background

The protein encoded by this gene is a member of the RP/EB family of genes. The protein localizes to the cytoplasmic microtubule network and binds APC, a homolog of the adenomatous polyposis coli tumor suppressor gene.

### For Research Use Only