

Vitamin D-binding protein/DPB Polyclonal Antibody(Capture/Detector)

catalog number: AN001150P



Note: Centrifuge before opening to ensure complete recovery of vial contents.

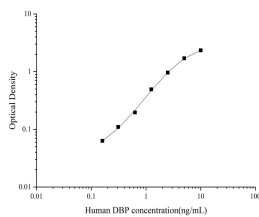
Description

Reactivity	Human
Immunogen	Recombinant Human Vitamin D-binding protein/DPB protein expressed by Mammalian
Host	Rabbit
Isotype	Rabbit IgG
Purification	Antigen Affinity Purification
Conjugation	Unconjugated
buffer	Phosphate buffered solution, pH 7.2, containing 0.05% proclin 300.

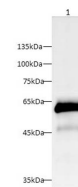
Applications

Applications	Recommended Dilution
ELISA Capture	2-8 µg/mL
ELISA Detector	0.1-0.4 µg/mL
WB	1:1000-1:2000

Data



Sandwich ELISA-Recombinant Human Vitamin D-binding protein/DPB protein standard curve. Background subtracted standard curve using Vitamin D-binding protein/DPB antibody(AN001150P)(Capture), Vitamin D-binding protein/DPB antibody(AN001150P)(Detector) in sandwich ELISA. The reference range value for Recombinant Human Vitamin D-binding protein/DPB protein is 0.16-10 ng/mL.



Western blot with Anti Vitamin D-binding protein/DPB Polyclonal antibody at dilution of 1:1000. Lane 1: Human plasma.

Observed-MV: 60 kDa
Calculated-MV: 53 kDa

Preparation & Storage

Storage	Store at 4°C valid for 12 months or -20°C valid for long term storage, avoid freeze / thaw cycles.
Shipping	The product is shipped with ice pack, upon receipt, store it immediately at the temperature recommended.

Background

Vitamin D binding protein is a sparsely glycosylated serum protein responsible for highly specific binding and tissue-specific delivery of vitamin D and its metabolites. In addition, it is also an actin scavenger, and is the precursor to the immunomodulatory protein, Gc-MAF. Vitamin D binding protein has been proposed to have significant roles in C5a chemotaxis, osteoclast development and possibly in macrophage activation/recruitment.

For Research Use Only

A Reliable Research Partner in Life Science and Medicine
Tel: 400-999-2100

Email: techsupport@elabscience.cn

Web: www.elabscience.cn

Rev. V1.5