

## Elab Fluor® 647 Anti-Human TCRV $\gamma$ 9 Antibody[B3]

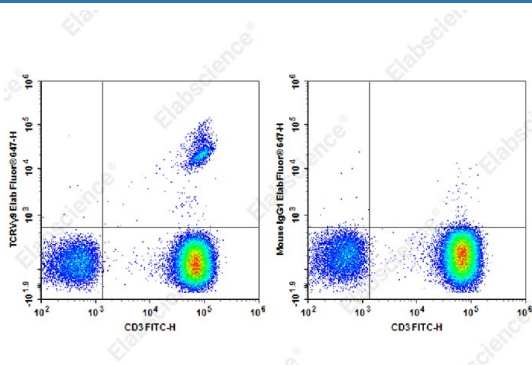
Catalog Number: AN00357M

**Note:** Centrifuge before opening to ensure complete recovery of vial contents.

Description	
Reactivity	Human
Host	Mouse
Isotype	Mouse IgG1
Clone No.	B3
Isotype Control	Elab Fluor® 647 Mouse IgG1, $\kappa$ Isotype Control[MOPC-21] [Product E-AB-F09792M]
Conjugation	Elab Fluor® 647
Conjugation Information	Elab Fluor® 647 is designed to be excited by the Red laser (627-640 nm) and detected using an optical filter centered near 670 nm (e.g., a 660/20 nm bandpass filter).
Storage Buffer	Phosphate buffered solution, pH 7.2, containing 0.09% sodium azide and 1% BSA.

Applications	Recommended usage
FCM	Each lot of this antibody is quality control tested by flow cytometric analysis. <b>The amount of the reagent is suggested to be used 5 <math>\mu</math>L of antibody per test (millie cells in 100 <math>\mu</math>L staining volume or per 119 <math>\mu</math>L of whole blood).</b> Please check your vial before the experiment. Since applications vary, the appropriate dilutions must be determined for individual use.

### Data



Staining of normal human peripheral blood cells with FITC Anti-Human CD3 Antibody and Elab Fluor® 647 Anti-Human TCR V $\gamma$ 9 Antibody[B3] (left) or Elab Fluor® 647 Mouse IgG1,  $\kappa$  Isotype Control (right). Cells in the lymphocytes gate were used for analysis.

Preparation & Storage	
Storage	Keep as concentrated solution. This product can be stored at 2-8°C for 12 months. Please protected from prolonged exposure to light and do not freeze.
Shipping	Ice bag

Antigen Information	
Alternate Names	T cell receptor V $\gamma$ 9;TCR V $\gamma$ 2;TRGV9;TCRGV2S1
Uniprot ID	Q99603
Gene ID	6965

### For Research Use Only

## Background

The V $\gamma$ 9 TCR is a variant of the TCR  $\gamma$  chain expressed on a subset of  $\gamma/\delta$  T cells. V $\gamma$ 9V $\delta$ 2 T lymphocytes, a major  $\gamma/\delta$  T cell subset in humans, recognize phosphoantigens, certain tumor cells, and cells treated with aminobisphosphonates. This cell population displays cytolytic activity against various tumor cells. The  $\gamma/\delta$  TCR is a heterodimeric TCR complex composed of covalently bound  $\gamma$  and  $\delta$  chains involved in antigen recognition and the non-covalently associated monomorphic proteins CD3 $\delta$ ,  $\gamma$ ,  $\epsilon$ , and  $\zeta$  chains.