

Recombinant Mouse CPA2 Protein (His Tag)

Catalog Number:PKSM041201



Note: Centrifuge before opening to ensure complete recovery of vial contents.

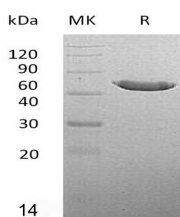
Description

Synonyms	CPA2;Carboxypeptidase A2
Species	Mouse
Expression Host	HEK293 Cells
Sequence	Gln17-Tyr417
Accession	Q504N0
Calculated Molecular Weight	46.2 kDa
Observed molecular weight	41-50 kDa
Tag	C-His

Properties

Purity	> 95 % as determined by reducing SDS-PAGE.
Endotoxin	< 1.0 EU per µg of the protein as determined by the LAL method.
Storage	Generally, lyophilized proteins are stable for up to 12 months when stored at -20 to -80°C. Reconstituted protein solution can be stored at 4-8°C for 2-7 days. Aliquots of reconstituted samples are stable at < -20°C for 3 months.
Shipping	This product is provided as lyophilized powder which is shipped with ice packs.
Formulation	Lyophilized from a 0.2 µm filtered solution of 20mM Tris-HCl, 150mM NaCl, pH 8.0. Normally 5 % - 8 % trehalose, mannitol and 0.01 % Tween80 are added as protectants before lyophilization. Please refer to the specific buffer information in the print
Reconstitution	Please refer to the printed manual for detailed information.

Data



> 95 % as determined by reducing SDS-PAGE.

Background

Mouse carboxypeptidase A2(CPA2) is a secreted pancreatic procarboxy -peptidase which belongs to the peptidase M14 family. CPA2 consists of a signal peptide, a pro region and a mature chain. It can be activated after cleavage of the pro peptide. CPA2 cleaves the C-terminal amide or ester bond of peptides that have a free C-terminal carboxyl group. The hydrolytic action of CPA2 was identified with a preference towards long substrates with aromatic amino acids in their C-terminal end, particularly tryptophan.

For Research Use Only

A Reliable Research Partner in Life Science and Medicine

Toll-free: 1-888-852-8623

Web: www.elabscience.com

Tel: 1-832-243-6086

Email: techsupport@elabscience.com

Fax: 1-832-243-6017