

Recombinant Phospho-CRMP2 (Thr514) Monoclonal Antibody

catalog number: **AN302073L**

Note: Centrifuge before opening to ensure complete recovery of vial contents.

Description

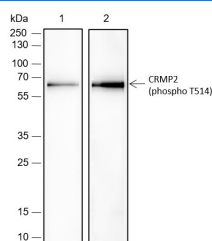
Reactivity	Rat;
Immunogen	Phosphorylated human CRMP2 (Thr514) peptide
Host	Rabbit
Isotype	IgG, κ
Clone	A793
Purification	Protein A purified
Buffer	PBS, 50% glycerol, 0.05% Proclin 300, 0.05% protein protectant.

Applications

Recommended Dilution

WB	1:500-1:1000
-----------	--------------

Data



Western Blot with Phospho-CRMP2 (Thr514) Monoclonal Antibody at dilution of 1:1000. Lane 1: PC-12 lysate, the membrane treated with alkaline phosphatase for 1 hour,

Lane 2: PC-12 lysate

Observed-MW:60-80 kDa

Calculated-MW:63 kDa

Preparation & Storage

Storage	Store at -20°C Valid for 12 months. Avoid freeze / thaw cycles.
Shipping	Ice bag

Background

This gene encodes a member of the collapsin response mediator protein family. Collapsin response mediator proteins form homo- and hetero-tetramers and facilitate neuron guidance, growth and polarity. The encoded protein promotes microtubule assembly and is required for Sema3A-mediated growth cone collapse, and also plays a role in synaptic signaling through interactions with calcium channels. This gene has been implicated in multiple neurological disorders, and hyperphosphorylation of the encoded protein may play a key role in the development of Alzheimer's disease. Alternatively spliced transcript variants encoding multiple isoforms have been observed for this gene.

For Research Use Only