

## Pancreatic lipase/PTL Polyclonal Antibody

catalog number: E-AB-40636

**Note:** Centrifuge before opening to ensure complete recovery of vial contents.

### Description

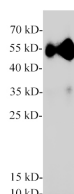
<b>Reactivity</b>	Mouse;Rat
<b>Immunogen</b>	Recombinant Human Pancreatic lipase protein expressed by E.coli.
<b>Host</b>	Rabbit
<b>Isotype</b>	IgG
<b>Purification</b>	Antigen Affinity Purification
<b>Conjugation</b>	Unconjugated
<b>Buffer</b>	PBS with 0.05% Proclin300, 1% protective protein and 50% glycerol, pH7.4

### Applications

### Recommended Dilution

<b>WB</b>	1:1000-1:2000
-----------	---------------

### Data



Western blot of Mouse pancreas with anti-Pancreatic lipase polyclonal antibody at 1:2000 dilution.

**Observed-MW:51 kDa**

**Calculated-MW:51 kDa**



Western blot of Rat pancreas with Pancreatic lipase polyclonal antibody at 1:2000 dilution.

**Observed-MW:51 kDa**

**Calculated-MW:51 kDa**

### Preparation & Storage

<b>Storage</b>	Store at -20°C Valid for 12 months. Avoid freeze / thaw cycles.
<b>Shipping</b>	The product is shipped with ice pack, upon receipt, store it immediately at the temperature recommended.

### Background

Plays an important role in fat metabolism. It preferentially splits the esters of long-chain fatty acids at positions 1 and 3, producing mainly 2-monoacylglycerol and free fatty acids, and shows considerably higher activity against insoluble emulsified substrates than against soluble ones.