

# Elab Fluor<sup>®</sup> 488-conjugated Vinculin Monoclonal Antibody

catalog number: AN00297L



**Note:** Centrifuge before opening to ensure complete recovery of vial contents.

## Description

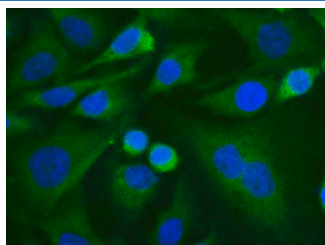
<b>Reactivity</b>	Human;Mouse;Rat
<b>Immunogen</b>	Recombinant human Vinculin protein expressed by E.coli
<b>Host</b>	Mouse
<b>Isotype</b>	IgG1
<b>Clone</b>	4D4
<b>Purification</b>	Protein A/G Purification
<b>Conjugation</b>	Elab Fluor <sup>®</sup> 488(Ex/Em:493nm/519nm)
<b>buffer</b>	PBS with 0.05% proclin 300, 1% protective protein and 50% glycerol,pH7.4

## Applications

## Recommended Dilution

<b>IF</b>	1:100-1:200
-----------	-------------

## Data



Immunofluorescence analysis of HeLa cells using Elab Fluor<sup>®</sup> 488-conjugated Vinculin Monoclonal Antibody at dilution of 1:100

## Preparation & Storage

<b>Storage</b>	Store at -20°C Valid for 12 months. Avoid freeze / thaw cycles. Protected from prolonged exposure to light.
<b>Shipping</b>	The product is shipped with ice pack,upon receipt,store it immediately at the temperature recommended.

## Background

Vinculin belongs to the vinculin/alpha-catenin family. It is an actin filament (F-actin)-binding protein which involved in cell-matrix adhesion and cell-cell adhesion. Vinculin regulates cell-surface E-cadherin expression and potentiates mechanosensing by the E-cadherin complex. It may also play important roles in cell morphology and locomotion. Vinculin is a 117-kDa,1,066-amino-acid protein which is ubiquitously expressed. Its splice variant,metavinculin (124 kDa), is muscle-specific.

## For Research Use Only

A Reliable Research Partner in Life Science and Medicine  
Tel: 400-999-2100

Email:[techsupport@elabscience.cn](mailto:techsupport@elabscience.cn)

Web:[www.elabscience.cn](http://www.elabscience.cn)

Rev. V1.5