

VCAM-1/CD106 Polyclonal Antibody(Capture/Detector)

catalog number: AN000250P

Note: Centrifuge before opening to ensure complete recovery of vial contents.

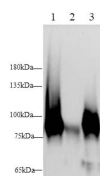
Description

Reactivity	Human;Mouse;Rat
Immunogen	Recombinant Rat VCAM-1/CD106 protein expressed by Mammalian
Host	Rabbit
Isotype	Rabbit IgG
Purification	Antigen Affinity Purification
Buffer	Phosphate buffered solution, pH 7.2, containing 0.05% Proclin300.

Applications Recommended Dilution

WB	1:500-1:1000
IHC	1:1000-1:2000
ELISA Capture	2-8 µg/mL
ELISA Detector	0.1-0.4 µg/mL

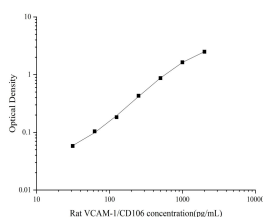
Data



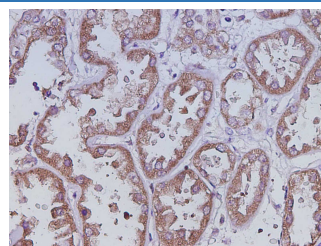
Western Blot with VCAM-1/CD106 Polyclonal Antibody at dilution of 1:500. Lane 1: Mouse spleen, Lane 2: Rat kidney, Lane 3: Rat spleen.

Observed-MW:75-100 kDa

Calculated-MW:81 kDa



Sandwich ELISA-Recombinant Rat VCAM-1/CD106 protein standard curve. Background subtracted standard curve using VCAM-1/CD106 antibody(AN000250P) (Capture), VCAM-1/CD106 antibody(AN000250P)(Detector) in sandwich ELISA. The reference range value for Recombinant Rat VCAM-1/CD106 protein is 31.25-2000 pg/mL.



Immunohistochemistry of paraffin-embedded Human Kidney cancer using VCAM-1/CD106 Polyclonal Antibody at dilution of 1:2000.

Preparation & Storage

For Research Use Only

Toll-free: 1-888-852-8623
Web: www.elabscience.com

Tel: 1-832-243-6086
Email: techsupport@elabscience.com

Fax: 1-832-243-6017

Rev. V1.9

Storage

Store at 4°C valid for 12 months or -20°C valid for long term storage, avoid freeze / thaw cycles.

Shipping

The product is shipped with ice pack, upon receipt, store it immediately at the temperature recommended.

Background

Cell adhesion glycoprotein predominantly expressed on the surface of endothelial cells that plays an important role in immune surveillance and inflammation. Acts as a major regulator of leukocyte adhesion to the endothelium through interaction with different types of integrins. During inflammatory responses, binds ligands on the surface of activated endothelial cells to initiate the activation of calcium channels and the plasma membrane-associated small GTPase RAC1 leading to leukocyte transendothelial migration. Serves also as a quality-control checkpoint for entry into bone marrow by providing a 'don't-eat-me' stamping in the context of major histocompatibility complex (MHC) class-I presentation.

For Research Use Only

Toll-free: 1-888-852-8623

Web: www.elabscience.com

Tel: 1-832-243-6086

Email: techsupport@elabscience.com

Fax: 1-832-243-6017

Rev. V1.9