

KCNMB3 Polyclonal Antibody

Catalog Number: E-AB-16541



Note: Centrifuge before opening to ensure complete recovery of vial contents.

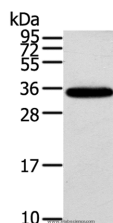
Description

Reactivity	Human, Mouse
Immunogen	Synthetic peptide of human KCNMB3
Host	Rabbit
Isotype	IgG
Purification	Affinity purification
Conjugation	Unconjugated
Formulation	PBS with 0.05% sodium azide and 50% glycerol, PH7.4

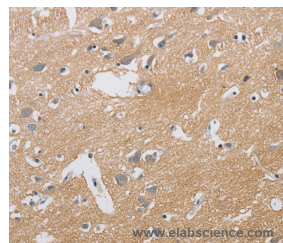
Applications Recommended Dilution

WB	1:500-1:2000
IHC	1:25-1:100

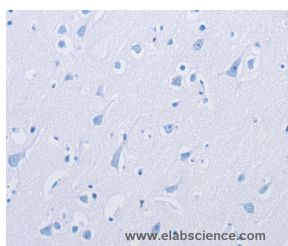
Data



Western Blot analysis of Mouse brain tissue using KCNMB3 Polyclonal Antibody at dilution of 1:300
Calculated Mw: 32kDa



Immunohistochemistry of paraffin-embedded Human brain using KCNMB3 Polyclonal Antibody at dilution of 1:40



Immunohistochemistry of paraffin-embedded using KCNMB3 Polyclonal Antibody at dilution of 1:

Preparation & Storage

Storage Store at -20°C. Avoid freeze / thaw cycles.

Background

MaxiK channels are large conductance, voltage and calcium-sensitive potassium channels which are fundamental to the control of smooth muscle tone and neuronal excitability. MaxiK channels can be formed by 2 subunits: the pore-forming alpha subunit and the modulatory beta subunit. The protein encoded by this gene is an auxiliary beta subunit which partially inactivate or slightly decrease the activation time of MaxiK alpha subunit currents. Alternative splicing results in multiple transcript variants. A related pseudogene has been identified on chromosome 22.

For Research Use Only

A Reliable Research Partner in Life Science and Medicine

Toll-free: 1-888-852-8623

Web: www.elabscience.com

Tel: 1-832-243-6086

Email: techsupport@elabscience.com

Fax: 1-832-243-6017