

Recombinant Human FGF23 protein (SUMO,His tag)

Catalog Number:PDEH100192



Note: Centrifuge before opening to ensure complete recovery of vial contents.

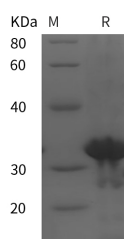
Description

Synonyms	FGF-23;Fgf23;ADHR;FGF23;fibroblast growth factor 23;HPDR2;HYPF;phosphatonin;PHPTC
Species	Human
Expression Host	E.coli
Sequence	Ala 24-Val 126
Accession	Q9GZV9
Calculated Molecular Weight	31.2 kDa
Observed molecular weight	32 kDa
Tag	N-SUMO-His

Properties

Purity	> 95 % as determined by reducing SDS-PAGE.
Endotoxin	Please contact us for more information.
Storage	Generally, lyophilized proteins are stable for up to 12 months when stored at -20 to -80°C. Reconstituted protein solution can be stored at 4-8°C for 2-7 days. Aliquots of reconstituted samples are stable at < -20°C for 3 months.
Shipping	This product is provided as lyophilized powder which is shipped with ice packs.
Formulation	Lyophilized from sterile PBS, pH 7.4. Normally 5 % - 8 % trehalose, mannitol and 0.01 % Tween80 are added as protectants before lyophilization. Please refer to the specific buffer information in the printed manual.
Reconstitution	Please refer to the printed manual for detailed information.

Data



> 95 % as determined by reducing SDS-PAGE.

Background

Fibroblast growth factor 23 (FGF?23) is a 30?32 kDa member of the FGF family, within a subfamily that also includes FGF?19 and FGF?21. FGF proteins contain a 120 amino acid (aa) core FGF domain that exhibits a beta ?trefoil structure. FGF?19 subfamily members are highly diffusible molecules owing to their poor ECM/heparin sulfate binding and plasma?stabilizing intramolecular folds. FGF?23 is produced by osteocytes and osteoblasts in response to high circulating phosphate levels, elevated parathyroid hormone, and circulatory volume loading. It functions as an endocrine phosphatonin by suppressing circulating phosphate levels . FGF?23 interaction with renal proximal tubular epithelium decreases the renal resorption of phosphate by down?regulating phosphate transporters and by suppressing vitamin D

For Research Use Only

A Reliable Research Partner in Life Science and Medicine

Toll-free: 1-888-852-8623

Web: www.elabscience.com

Tel: 1-832-243-6086

Email: techsupport@elabscience.com

Fax: 1-832-243-6017

Recombinant Human FGF23 protein (SUMO,His tag)

Catalog Number:PDEH100192



production. It also decreases the intestinal absorption of phosphate.

For Research Use Only

A Reliable Research Partner in Life Science and Medicine

Toll-free: 1-888-852-8623

Tel: 1-832-243-6086

Fax: 1-832-243-6017

Web: www.elabscience.com

Email: techsupport@elabscience.com