

# GOT1 Polyclonal Antibody

Catalog Number: E-AB-14773

**Note:** Centrifuge before opening to ensure complete recovery of vial contents.

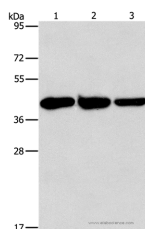
## Description

<b>Reactivity</b>	Human, Mouse, Rat
<b>Immunogen</b>	Recombinant protein of human GOT1
<b>Host</b>	Rabbit
<b>Isotype</b>	IgG
<b>Purification</b>	Affinity purification
<b>Conjugation</b>	Unconjugated
<b>Formulation</b>	PBS with 0.05% sodium azide and 50% glycerol, PH7.4

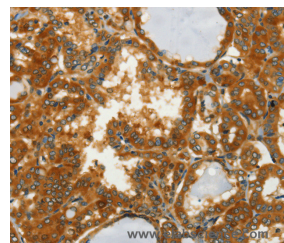
## Applications Recommended Dilution

<b>WB</b>	1:1000-1:5000
<b>IHC</b>	1:50-1:200

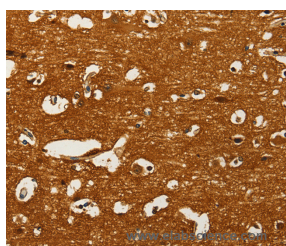
## Data



Western Blot analysis of Human normal liver tissue, Mouse brain and heart tissue using GOT1 Polyclonal Antibody at dilution of 1:1600  
**Calculated Mw: 46kDa**



Immunohistochemistry of paraffin-embedded Human thyroid cancer using GOT1 Polyclonal Antibody at dilution of 1:50



Immunohistochemistry of paraffin-embedded Human brain using GOT1 Polyclonal Antibody at dilution of 1:50

## Preparation & Storage

**Storage** Store at -20°C. Avoid freeze / thaw cycles.

## Background

Glutamic-oxaloacetic transaminase is a pyridoxal phosphate-dependent enzyme which exists in cytoplasmic and mitochondrial forms, GOT1 and GOT2, respectively. GOT plays a role in amino acid metabolism and the urea and tricarboxylic acid cycles. The two enzymes are homodimeric and show close homology.

## For Research Use Only

A Reliable Research Partner in Life Science and Medicine

Toll-free: 1-888-852-8623

Web: [www.elabscience.com](http://www.elabscience.com)

Tel: 1-832-243-6086

Email: [techsupport@elabscience.com](mailto:techsupport@elabscience.com)

Fax: 1-832-243-6017