

# Recombinant Human GPR114 Protein (Fc Tag)

Catalog Number:PKSH031386



**Note:** Centrifuge before opening to ensure complete recovery of vial contents.

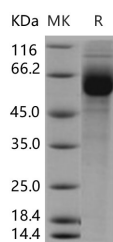
## Description

<b>Synonyms</b>	GPR114;PGR27
<b>Species</b>	Human
<b>Expression Host</b>	HEK293 Cells
<b>Sequence</b>	Met 1-Gly184
<b>Accession</b>	Q8IZF4
<b>Calculated Molecular Weight</b>	45.6 kDa
<b>Observed molecular weight</b>	56-63 kDa
<b>Tag</b>	C-hFc

## Properties

<b>Purity</b>	> 94 % as determined by reducing SDS-PAGE.
<b>Endotoxin</b>	< 1.0 EU per µg of the protein as determined by the LAL method.
<b>Storage</b>	Generally, lyophilized proteins are stable for up to 12 months when stored at -20 to -80°C. Reconstituted protein solution can be stored at 4-8°C for 2-7 days. Aliquots of reconstituted samples are stable at < -20°C for 3 months.
<b>Shipping</b>	This product is provided as lyophilized powder which is shipped with ice packs.
<b>Formulation</b>	Lyophilized from sterile PBS, pH 7.4 Normally 5 % - 8 % trehalose, mannitol and 0.01 % Tween80 are added as protectants before lyophilization. Please refer to the specific buffer information in the printed manual.
<b>Reconstitution</b>	Please refer to the printed manual for detailed information.

## Data



> 94 % as determined by reducing SDS-PAGE.

## Background

GPR114 belongs to the G-protein coupled receptor 2 family. Members of this family share a common molecular architecture which consists of seven transmembrane domains, three extracellular loops, three intracellular loops, an amino-terminal extracellular domain and an intracellular carboxyl terminus. It is thought that light acts as the activating stimulus of a G-protein-coupled receptor (GPCR). GPCRs are expected to have molecular function (G-protein coupled receptor activity) and to localize in various compartments (endoplasmic reticulum membrane, plasma membrane, integral to membrane). Family B of the GPCRs is a small but structurally and functionally diverse group of proteins that includes receptors for polypeptide hormones, molecules thought to mediate intercellular interactions at the plasma membrane and a group of Drosophila proteins that regulate stress responses and longevity. GPR114 contains 1 GPS domain. GPR114 gene

## For Research Use Only

A Reliable Research Partner in Life Science and Medicine

Toll-free: 1-888-852-8623

Web: [www.elabscience.com](http://www.elabscience.com)

Tel: 1-832-243-6086

Email: [techsupport@elabscience.com](mailto:techsupport@elabscience.com)

Fax: 1-832-243-6017

# Recombinant Human GPR114 Protein (Fc Tag)

Catalog Number:PKSH031386



has been proposed to participate in processes (G-protein coupled receptor protein signaling pathway, neuropeptide signaling pathway).

---

## For Research Use Only

A Reliable Research Partner in Life Science and Medicine

Toll-free: 1-888-852-8623

Web: [www.elabscience.com](http://www.elabscience.com)

Tel: 1-832-243-6086

Email: [techsupport@elabscience.com](mailto:techsupport@elabscience.com)

Fax: 1-832-243-6017