

Recombinant Human Calcitonin/CALCA Protein (His Tag)



Catalog Number: PKSH032145

Note: Centrifuge before opening to ensure complete recovery of vial contents.

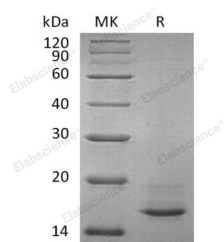
Description

Synonyms	Calcitonin; Katalcalcin; Calcitonin Carboxyl-Terminal Peptide; CCP; PDN-21; CALCA; CALC1
Species	Human
Expression Host	HEK293 Cells
Sequence	Ala26-Asn141
Accession	P01258
Calculated Molecular Weight	13.8 kDa
Observed molecular weight	16 kDa
Tag	C-His

Properties

Purity	> 90 % as determined by reducing SDS-PAGE.
Endotoxin	< 1.0 EU per µg of the protein as determined by the LAL method.
Storage	Generally, lyophilized proteins are stable for up to 12 months when stored at -20 to -80°C. Reconstituted protein solution can be stored at 4-8°C for 2-7 days. Aliquots of reconstituted samples are stable at < -20°C for 3 months.
Shipping	This product is provided as lyophilized powder which is shipped with ice packs.
Formulation	Lyophilized from a 0.2 µm filtered solution of 20mM PB, 150mM NaCl, pH 7.4. Normally 5 % - 8 % trehalose, mannitol and 0.01% Tween80 are added as protectants before lyophilization. Please refer to the specific buffer information in the printed manual
Reconstitution	Please refer to the printed manual for detailed information.

Data



> 90 % as determined by reducing SDS-PAGE.

Background

Calcitonin is a secreted protein which belongs to the calcitonin family. Calcitonin is cleaved into the following two chains: Calcitonin and Katalcalcin. Katalcalcin is a potent plasma calcium-lowering peptide. Calcitonin is a 32-amino acid linear polypeptide hormone. Calcitonin acts to reduce blood calcium (Ca^{2+}); opposing the effects of parathyroid hormone (PTH). Its importance in humans has not been as well established as its importance in other animals; as its function is usually not significant in the regulation of normal calcium homeostasis. Calcitonin causes a rapid but short-lived drop in the level of calcium and phosphate in blood by promoting the incorporation of those ions in the bones.

For Research Use Only

A Reliable Research Partner in Life Science and Medicine

Toll-free: 1-888-852-8623

Web: www.elabscience.com

Tel: 1-832-243-6086

Email: techsupport@elabscience.com

Fax: 1-832-243-6017