

SLC8A1 Polyclonal Antibody

Catalog Number:E-AB-92771



Note: Centrifuge before opening to ensure complete recovery of vial contents.

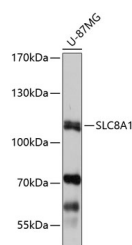
Description

Reactivity	Human
Immunogen	Recombinant fusion protein of human SLC8A1
Host	Rabbit
Isotype	IgG
Purification	Affinity purification
Conjugation	Unconjugated
Formulation	PBS with 0.01% thiomersal, 50% glycerol, pH 7.3.

Applications Recommended Dilution

WB	1:500-1:2000
-----------	--------------

Data



Western blot analysis of extracts of U-87MG cells using SLC8A1 Polyclonal Antibody at 1:1000 dilution.

Observed MW:109kDa

Calculated Mw:104kDa/107kDa/108kDa

Preparation & Storage

Storage	Store at -20°C. Avoid freeze/thaw cycles.
----------------	---

Background

In cardiac myocytes, Ca^{2+} concentrations alternate between high levels during contraction and low levels during relaxation. The increase in Ca^{2+} concentration during contraction is primarily due to release of Ca^{2+} from intracellular stores. However, some Ca^{2+} also enters the cell through the sarcolemma (plasma membrane). During relaxation, Ca^{2+} is sequestered within the intracellular stores. To prevent overloading of intracellular stores, the Ca^{2+} that entered across the sarcolemma must be extruded from the cell. The Na^{+} - Ca^{2+} exchanger is the primary mechanism by which the Ca^{2+} is extruded from the cell during relaxation. In the heart, the exchanger may play a key role in digitalis action. The exchanger is the dominant mechanism in returning the cardiac myocyte to its resting state following excitation.

For Research Use Only

A Reliable Research Partner in Life Science and Medicine

Toll-free: 1-888-852-8623

Web: www.elabscience.com

Tel: 1-832-243-6086

Email: techsupport@elabscience.com

Fax: 1-832-243-6017