

IRF5 Polyclonal Antibody

Catalog Number: E-AB-19512

Note: Centrifuge before opening to ensure complete recovery of vial contents.

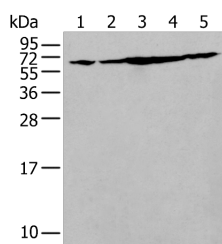
Description

Reactivity	Human, Mouse
Immunogen	Synthetic peptide of human IRF5
Host	Rabbit
Isotype	IgG
Purification	Antigen affinity purification
Conjugation	Unconjugated
Formulation	PBS with 0.05% NaN ₃ and 40% Glycerol, pH7.4

Applications Recommended Dilution

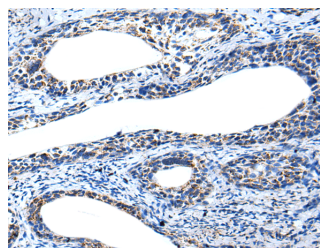
WB	1:500-1:2000
IHC	1:25-1:100
ELISA	1:5000-1:10000

Data

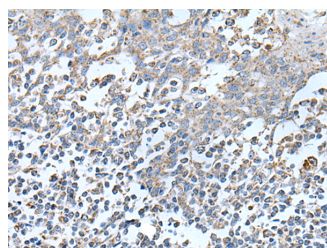


Western blot analysis of NIH/3T3, HeLa, Jurkat, HepG2 and A549 cell lysates using IRF5 Polyclonal Antibody at dilution of 1:250

Observed MW: Refer to figures
Calculated MW: 56 kDa



Immunohistochemistry of paraffin-embedded Human cervical cancer tissue using IRF5 Polyclonal Antibody at dilution of 1:25 (×200)



Immunohistochemistry of paraffin-embedded Human tonsil tissue using IRF5 Polyclonal Antibody at dilution of 1:25 (×200)

Preparation & Storage

Storage Store at -20°C. Avoid freeze / thaw cycles.

Background

For Research Use Only

A Reliable Research Partner in Life Science and Medicine

Toll-free: 1-888-852-8623

Web: www.elabscience.com

Tel: 1-832-243-6086

Email: techsupport@elabscience.com

Fax: 1-832-243-6017

IRF5 Polyclonal Antibody

Catalog Number: E-AB-19512



IRF5, also named as SLEB10, contains one IRF tryptophan pentad repeat DNA-binding domain and belongs to the IRF family. It is a transcription factor involved in the induction of interferons IFN α and IFN β and inflammatory cytokines upon virus infection. It is activated by TLR7 or TLR8 signaling. Genetic variations in IRF5 are associated with susceptibility to inflammatory bowel disease type 14 (IBD14) and systemic lupus erythematosus type 10 (SLEB10).

For Research Use Only

A Reliable Research Partner in Life Science and Medicine

Toll-free: 1-888-852-8623

Tel: 1-832-243-6086

Fax: 1-832-243-6017

Web: www.elabscience.com

Email: techsupport@elabscience.com