

Recombinant Mouse FGCP/GCPII/mGCP/NAALADase I/PSMA(N-6His)



Catalog Number:PKSM041421

Note: Centrifuge before opening to ensure complete recovery of vial contents.

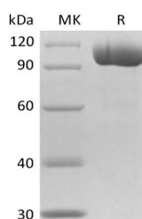
Description

Synonyms	Glutamate carboxypeptidase 2;FGCP;GCPII;mGCP;NAALADase I;PSMA;Cell growth-inhibiting gene 27 protein;Folate hydrolase 1
Species	Mouse
Expression Host	HEK293 Cells
Sequence	Ile44-Ala752
Accession	Q0VDM5
Calculated Molecular Weight	80.7 kDa
Observed molecular weight	100-120 kDa
Tag	N-His

Properties

Purity	> 95 % as determined by reducing SDS-PAGE.
Endotoxin	< 1.0 EU per µg of the protein as determined by the LAL method.
Storage	Generally, lyophilized proteins are stable for up to 12 months when stored at -20 to -80°C. Reconstituted protein solution can be stored at 4-8°C for 2-7 days. Aliquots of reconstituted samples are stable at < -20°C for 3 months.
Shipping	This product is provided as lyophilized powder which is shipped with ice packs.
Formulation	Lyophilized from a 0.2 µm filtered solution of 20mM PB, 8% Trehalose, 4% Mannitol, 50mM NaCl, 0.05% Tween 80, pH7.5. Normally 5 % - 8 % trehalose, mannitol and 0.01% Tween80 are added as protectants before lyophilization. Please refer to the speci
Reconstitution	Please refer to the printed manual for detailed information.

Data



> 95 % as determined by reducing SDS-PAGE.

Background

Glutamate carboxypeptidase 2, also known as FOLH1, PSMA, belongs to the M28B subfamily and the peptidase M28 family. It is highly expressed in prostate epithelium and can be detected in urinary bladder, kidney, testis, ovary, fallopian tube, breast, adrenal gland, liver, esophagus, stomach, small intestine, colon and brain (at protein level). PSMA is used as a diagnostic and prognostic indicator of prostate cancer, and as a possible marker for various neurological disorders such as schizophrenia, Alzheimer disease and Huntington disease. It has both folate hydrolase and N-acetylated-alpha-linked-acidic dipeptidase (NAALADase) activity and has a preference for tri-alpha-glutamate peptides. PSMA involves in

For Research Use Only

A Reliable Research Partner in Life Science and Medicine

Toll-free: 1-888-852-8623

Web: www.elabscience.com

Tel: 1-832-243-6086

Email: techsupport@elabscience.com

Fax: 1-832-243-6017

Recombinant Mouse FGCP/GCP/II/mGCP/NAALADase I/PSMA(N-6His)



Catalog Number:PKSM041421

prostate tumor progression and also exhibits a dipeptidyl-peptidase IV type activity. In vitro, PSMA cleaves Gly-Pro-AMC. PSMA is stable at pH greater than 6.5.

For Research Use Only

A Reliable Research Partner in Life Science and Medicine

Toll-free: 1-888-852-8623

Tel: 1-832-243-6086

Fax: 1-832-243-6017

Web: www.elabscience.com

Email: techsupport@elabscience.com