

XRCC4 Monoclonal Antibody

Catalog Number:E-AB-22044



Note: Centrifuge before opening to ensure complete recovery of vial contents.

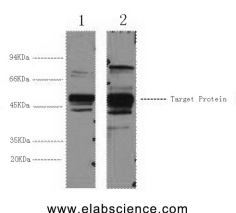
Description

Reactivity	Human
Immunogen	Synthetic Peptide
Host	Mouse
Isotype	IgG
Clone	Clone:8K2
Purification	Protein A purification
Conjugation	Unconjugated
Formulation	PBS with 0.02% sodium azide and 50% glycerol pH 7.4.

Applications Recommended Dilution

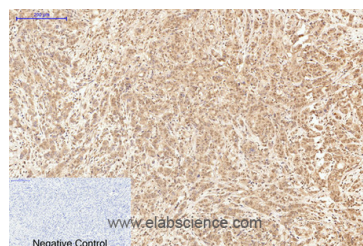
WB	1:500-1:2000
IHC	1:50-300
IF	1:50-1:200
IP	1:100-1:300

Data

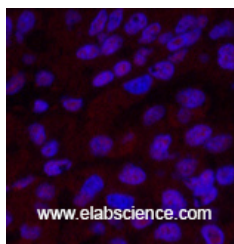


Western Blot analysis of 1) HeLa, 2) 293T cells using XRCC4 Monoclonal Antibody at dilution of 1:3000.

Observed MW:38kDa
Calculated Mw:38kDa



Immunohistochemistry of paraffin-embedded Human breast cancer tissue using XRCC4 Monoclonal Antibody at dilution of 1:200.



Immunofluorescence analysis of Human liver cancer tissue using XRCC4 Monoclonal Antibody at dilution of 1:200.

Preparation & Storage

Storage Store at -20°C. Avoid freeze / thaw cycles.

For Research Use Only

A Reliable Research Partner in Life Science and Medicine

Toll-free: 1-888-852-8623

Web: www.elabscience.com

Tel: 1-832-243-6086

Email: techsupport@elabscience.com

Fax: 1-832-243-6017

XRCC4 Monoclonal Antibody

Catalog Number:E-AB-22044



Background

Involved in DNA non-homologous end joining (NHEJ) required for double-strand break repair and V(D)J recombination. Binds to DNA and to DNA ligase IV (LIG4). The LIG4-XRCC4 complex is responsible for the NHEJ ligation step, and XRCC4 enhances the joining activity of LIG4. Binding of the LIG4-XRCC4 complex to DNA ends is dependent on the assembly of the DNA-dependent protein kinase complex DNA-PK to these DNA ends.

For Research Use Only

A Reliable Research Partner in Life Science and Medicine

Toll-free: 1-888-852-8623

Web: www.elabscience.com

Tel: 1-832-243-6086

Email: techsupport@elabscience.com

Fax: 1-832-243-6017