

# ZNF672 Polyclonal Antibody

catalog number: E-AB-52339

**Note:** Centrifuge before opening to ensure complete recovery of vial contents.

## Description

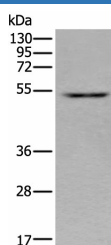
<b>Reactivity</b>	Human
<b>Immunogen</b>	Full length fusion protein
<b>Host</b>	Rabbit
<b>Isotype</b>	IgG
<b>Purification</b>	Antigen affinity purification
<b>Conjugation</b>	Unconjugated
<b>buffer</b>	Phosphate buffered solution, pH 7.4, containing 0.05% stabilizer and 50% glycerol.

## Applications

## Recommended Dilution

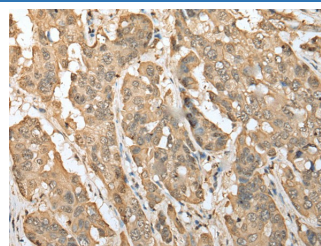
<b>WB</b>	1:500-1:2000
<b>IHC</b>	1:25-1:100

## Data



Western blot analysis of HEPG2 cell lysate using ZNF672 Polyclonal Antibody at dilution of 1:350

**Observed-MV: Refer to figures**  
**Calculated-MV: 50 kDa**



Immunohistochemistry of paraffin-embedded Human breast cancer tissue using ZNF672 Polyclonal Antibody at dilution of 1:30(×200)

## Preparation & Storage

<b>Storage</b>	Store at -20°C Valid for 12 months. Avoid freeze / thaw cycles.
<b>Shipping</b>	The product is shipped with ice pack, upon receipt, store it immediately at the temperature recommended.

## Background

ZNF672 (zinc finger protein 672) is a 452 amino acid nuclear protein that may be involved in transcriptional regulation. Belonging to the Krüppel C2H2-type zinc-finger protein family, ZNF672 contains 14 C2H2-type zinc fingers. ZNF672 exists as two alternatively spliced isoforms, and is encoded by a gene that maps to human chromosome 1q44. Human chromosome 1 spans 260 million base pairs, contains over 3,000 genes, comprises nearly 8% of the human genome, and houses a large number of disease-associated genes, including those that are involved in familial adenomatous polyposis, Stickler syndrome, Parkinson's disease, Gaucher disease, schizophrenia and Usher syndrome.

## For Research Use Only