

Recombinant Human LRRC25 Protein (His Tag)

Catalog Number:PKSH032691



Note: Centrifuge before opening to ensure complete recovery of vial contents.

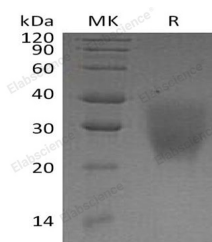
Description

Synonyms	Leucine-rich repeat-containing protein 25;Monocyte and plasmacytoid-activated protein;MAPA;FLJ38116;UNQ6169/PRO20174
Species	Human
Expression Host	HEK293 Cells
Sequence	Leu21-Thr165
Accession	Q8N386
Calculated Molecular Weight	16.7 kDa
Observed molecular weight	20-40 kDa
Tag	C-His

Properties

Purity	> 95 % as determined by reducing SDS-PAGE.
Endotoxin	< 1.0 EU per µg of the protein as determined by the LAL method.
Storage	Generally, lyophilized proteins are stable for up to 12 months when stored at -20 to -80°C. Reconstituted protein solution can be stored at 4-8°C for 2-7 days. Aliquots of reconstituted samples are stable at < -20°C for 3 months.
Shipping	This product is provided as lyophilized powder which is shipped with ice packs.
Formulation	Lyophilized from a 0.2 µm filtered solution of 20mM PB,150mM NaCl,pH7.4. Normally 5 % - 8 % trehalose, mannitol and 0.01% Tween80 are added as protectants before lyophilization. Please refer to the specific buffer information in the printed manual
Reconstitution	Please refer to the printed manual for detailed information.

Data



> 95 % as determined by reducing SDS-PAGE.

Background

Leucine-rich repeat-containing protein 25(LRRC25) is a single-pass type I membrane protein and contains 3 LRR (leucine-rich) repeats. The protein expressed in plasmacytoid dendritic cells (PDC), monocyte-derived dendritic cells (MDDC), granulocytes, monocytes, B-lymphocytes, peripheral blood leukocytes, spleen, bone marrow, and, to a lesser extent, lymph nodes, fetal liver, and appendix but not in thymus. The protein may be involved in the activation of cells of innate and acquired immunity.

For Research Use Only

A Reliable Research Partner in Life Science and Medicine

Toll-free: 1-888-852-8623

Web: www.elabscience.com

Tel: 1-832-243-6086

Email: techsupport@elabscience.com

Fax: 1-832-243-6017