

# Recombinant Mouse Bone Sialoprotein 2/IBSP Protein (His Tag)



Catalog Number: PKSM041355

**Note:** Centrifuge before opening to ensure complete recovery of vial contents.

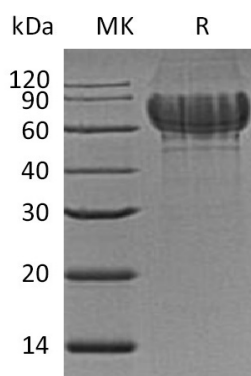
## Description

<b>Species</b>	Mouse
<b>Mol_Mass</b>	35.1 kDa
<b>Accession</b>	AAA21726.1
<b>Bio-activity</b>	Not validated for activity

## Properties

<b>Purity</b>	> 95 % as determined by reducing SDS-PAGE.
<b>Endotoxin</b>	< 1.0 EU per µg of the protein as determined by the LAL method.
<b>Storage</b>	Generally, lyophilized proteins are stable for up to 12 months when stored at -20 to -80 °C. Reconstituted protein solution can be stored at 4-8°C for 2-7 days. Aliquots of reconstituted samples are stable at < -20°C for 3 months.
<b>Shipping</b>	This product is provided as lyophilized powder which is shipped with ice packs.
<b>Formulation</b>	Lyophilized from a 0.2 µm filtered solution of PBS, pH 7.4. Normally 5% - 8% trehalose, mannitol and 0.01% Tween 80 are added as protectants before lyophilization. Please refer to the specific buffer information in the printed manual.
<b>Reconstitution</b>	Please refer to the printed manual for detailed information.

## Data



## Background

Bone sialoprotein 2 (IBSP) is a monomeric non-collagenous member of the SIBLING family of extracellular matrix proteins. It is principally associated with the early stages of bone mineralization. Mouse IBSP is synthesized as a 324 amino acid (aa) precursor that contains a 16 aa signal sequence and a 308 aa mature region. The mature segment is divided into a basic N-terminus (aa 17 - 62), a central region (aa 63 - 233), and an acidic C-terminus (aa 234 - 317). IBSP is highly glycosylated, sulfated and phosphorylated. Phosphorylation promotes HAp nucleation, while carbohydrate may regulate cell adhesion. IBSP binds tightly to hydroxyapatite, appears to form an integral part of the mineralized matrix. It is probably important to cell-matrix interaction and promotes Arg-Gly-Asp-dependent cell attachment.

## For Research Use Only

A Reliable Research Partner in Life Science and Medicine  
Tel: 400-999-2100

Email: [techsupport@elabscience.cn](mailto:techsupport@elabscience.cn)

Web: [www.elabscience.cn](http://www.elabscience.cn)

Rev. V3.2