

Recombinant Human GMPR Protein (E.coli, His Tag)

Catalog Number:PKSH030542



Note: Centrifuge before opening to ensure complete recovery of vial contents.

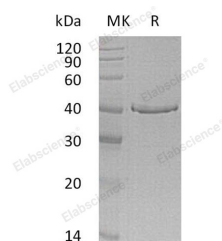
Description

Synonyms	GMF Reductase 1;Guanosine 5'-Monophosphate Oxidoreductase 1;Guanosine Monophosphate Reductase 1;GMF;GMF1
Species	Human
Expression Host	E.coli
Sequence	Met 1-Ser345
Accession	P36959
Calculated Molecular Weight	39.2 kDa
Observed molecular weight	37 kDa
Tag	N-His

Properties

Purity	> 85 % as determined by reducing SDS-PAGE.
Endotoxin	Please contact us for more information.
Storage	Generally, lyophilized proteins are stable for up to 12 months when stored at -20 to -80°C. Reconstituted protein solution can be stored at 4-8°C for 2-7 days. Aliquots of reconstituted samples are stable at < -20°C for 3 months.
Shipping	This product is provided as lyophilized powder which is shipped with ice packs.
Formulation	Lyophilized from sterile 50mM Tris, 150mM NaCl, 40% Glycerol, 1mM DTT, pH 8.0 Normally 5 % - 8 % trehalose, mannitol and 0.01% Tween80 are added as protectants before lyophilization. Please refer to the specific buffer information in the printed
Reconstitution	Please refer to the printed manual for detailed information.

Data



> 85 % as determined by reducing SDS-PAGE.

Background

GMF; also known as GMF1; belongs to the IMPDH/GMF family. This family of enzymes includes IMP dehydrogenase and GMF reductase. These enzymes are involved in purine metabolism and adopt a TIM barrel structure. GMF is an enzyme that catalyzes the irreversible and NADPH-dependent reductive deamination of GMF to IMP. GMF functions in the conversion of nucleobase; nucleoside and nucleotide derivatives of G to A nucleotides; and in maintaining the intracellular balance of A and G nucleotides.

For Research Use Only

A Reliable Research Partner in Life Science and Medicine

Toll-free: 1-888-852-8623

Web: www.elabscience.com

Tel: 1-832-243-6086

Email: techsupport@elabscience.com

Fax: 1-832-243-6017