

## Recombinant CNDP2 Monoclonal Antibody

catalog number: **AN300497P**

**Note:** Centrifuge before opening to ensure complete recovery of vial contents.

### Description

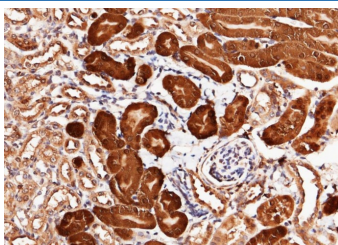
<b>Reactivity</b>	Mouse
<b>Immunogen</b>	Recombinant Mouse CNDP2 protein
<b>Host</b>	Rabbit
<b>Isotype</b>	IgG
<b>Clone</b>	B427
<b>Purification</b>	Protein A
<b>Buffer</b>	0.2 µm filtered solution in PBS

### Applications

### Recommended Dilution

<b>IHC-P</b>	1:100-1:500
--------------	-------------

### Data



Immunohistochemistry of paraffin-embedded mouse kidney using CNDP2 Monoclonal Antibody at dilution of 1:200.

Positive staining was localized to nephric tubule.

### Preparation & Storage

**Storage** This antibody can be stored at 2°C-8°C for one month without detectable loss of activity. Antibody products are stable for twelve months from date of receipt when stored at -20°C to -80°C. Preservative-Free. Avoid repeated freeze-thaw cycles.

**Shipping** Ice bag

### Background

Cytosolic non-specific dipeptidase, also known as CNDP dipeptidase 2, Glutamate carboxypeptidase-like protein 1, Peptidase A, CNDP2 and CN2, is a cytoplasm protein which belongs to the peptidase M2A family. CNDP2/CPGL is a cytosolic enzyme that can hydrolyze carnosine to yield L-histidine and beta-alanine. CNDP2/CPGL hydrolyzes a variety of dipeptides including L-carnosine but has a strong preference for Cys-Gly. It may play a role as tumor suppressor in hepatocellular carcinoma (HCC) cells. Isoform 1 of CNDP2/CPGL is ubiquitously expressed with higher levels in kidney and liver (at protein level). Isoform 2 of CNDP2/CPGL is expressed in fetal tissues, it is only expressed in adult liver and placental tissues. CNDP2/CPGL is highly expressed in the histaminergic neurons in the tuberomammillary nucleus, implying that it may supply histidine to histaminergic neurons for histamine synthesis.

### For Research Use Only