

Recombinant Phospho-EGFR (Tyr1068) Monoclonal Antibody

catalog number: AN301132L

Note: Centrifuge before opening to ensure complete recovery of vial contents.

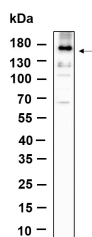
Description

Reactivity	Human;Mouse;Rat
Immunogen	A synthetic peptide corresponding to residues around (Tyr1068) of Human Phospho-EGFR
Host	Rabbit
Isotype	IgG, κ
Clone	11A2
Purification	Protein A
Buffer	PBS, 50% glycerol, 0.05% Proclin 300, 0.05% protein protectant.

Applications Recommended Dilution

WB	1:2000-1:10000
-----------	----------------

Data



Western Blot with Recombinant Phospho-EGFR (Tyr1068)
Monoclonal Antibody at dilution of 1:1000 dilution. Lane A:
A431 serum.

Observed-MW:175 kDa
Calculated-MW:134 kDa

Preparation & Storage

Storage	Store at -20°C Valid for 12 months. Avoid freeze / thaw cycles.
Shipping	Ice bag

Background

The protein encoded by this gene is a transmembrane glycoprotein that is a member of the protein kinase superfamily. This protein is a receptor for members of the epidermal growth factor family. EGFR is a cell surface protein that binds to epidermal growth factor. Binding of the protein to a ligand induces receptor dimerization and tyrosine autophosphorylation and leads to cell proliferation. Mutations in this gene are associated with lung cancer.

For Research Use Only