

PSMD6 Polyclonal Antibody

Catalog Number: E-AB-12849



Note: Centrifuge before opening to ensure complete recovery of vial contents.

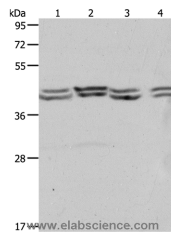
Description

Reactivity	Human, Mouse
Immunogen	Synthetic peptide of human PSMD6
Host	Rabbit
Isotype	IgG
Purification	Affinity purification
Conjugation	Unconjugated
Formulation	PBS with 0.05% sodium azide and 50% glycerol, PH7.4

Applications Recommended Dilution

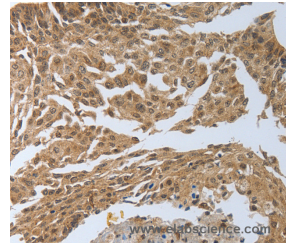
WB	1:500-1:2000
IHC	1:50-1:200

Data

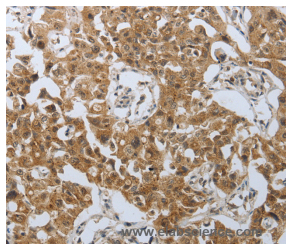


Western Blot analysis of HeLa, 293T, NIH/3T3 and Jurkat cell using PSMD6 Polyclonal Antibody at dilution of 1:650

Calculated Mw: 49/46kDa



Immunohistochemistry of paraffin-embedded Human cervical cancer using PSMD6 Polyclonal Antibody at dilution of 1:40



Immunohistochemistry of paraffin-embedded Human lung cancer using PSMD6 Polyclonal Antibody at dilution of 1:40

Preparation & Storage

Storage Store at -20°C. Avoid freeze / thaw cycles.

Background

This gene encodes a member of the protease subunit S10 family. The encoded protein is a subunit of the 26S proteasome which colocalizes with DNA damage foci and is involved in the ATP-dependent degradation of ubiquitinated proteins. Alternative splicing results in multiple transcript variants.

For Research Use Only

A Reliable Research Partner in Life Science and Medicine

Toll-free: 1-888-852-8623

Web: www.elabscience.com

Tel: 1-832-243-6086

Email: techsupport@elabscience.com

Fax: 1-832-243-6017