

PPIB Monoclonal Antibody

catalog number: E-AB-22170

Note: Centrifuge before opening to ensure complete recovery of vial contents.

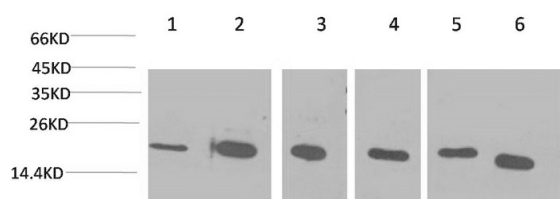
Description

Reactivity	Human;Mouse;Rat
Immunogen	Synthetic Peptide
Host	Mouse
Isotype	IgG
Clone	1B3
Purification	Protein A purification
Conjugation	Unconjugated
buffer	Phosphate buffered solution, pH 7.4, containing 0.05% stabilizer, 0.5% protein protectant and 50% glycerol.

Applications

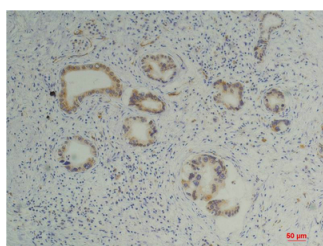
Applications	Recommended Dilution
WB	1:1000-2000
IHC	1:100-200

Data

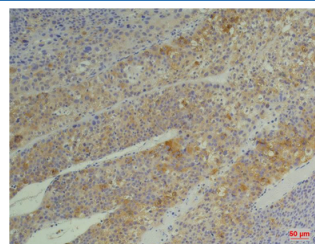


Western Blot analysis of 1) Hela, 2) Jurkat, 3) 293T, 4) Rat liver, 5) 3T3, 6) HepG2 using PPIB Monoclonal Antibody at dilution of 1:2000.

Observed-MV:21 kDa



Immunohistochemistry of paraffin-embedded Human pancreas carcinoma tissue using PPIB Monoclonal Antibody at dilution of 1:200.



Immunohistochemistry of paraffin-embedded Human hepatocarcinoma tissue using PPIB Monoclonal Antibody at dilution of 1:200.

Preparation & Storage

Storage	Store at -20°C Valid for 12 months. Avoid freeze / thaw cycles.
Shipping	The product is shipped with ice pack, upon receipt, store it immediately at the temperature recommended.

Background

For Research Use Only

PPIB Monoclonal Antibody

catalog number: E-AB-22170



The protein encoded by this gene is a cyclosporine-binding protein and is mainly located within the endoplasmic reticulum. It is associated with the secretory pathway and released in biological fluids. This protein can bind to cells derived from T- and B-lymphocytes, and may regulate cyclosporine A-mediated immunosuppression. Variants have been identified in this protein that give rise to recessive forms of osteogenesis imperfecta.

For Research Use Only

A Reliable Research Partner in Life Science and Medicine
Tel: 400-999-2100

Email: techsupport@elabscience.cn

Web: www.elabscience.cn

Rev. V1.7