

# Recombinant Mouse Notch A/NOTCH1 Protein (His Tag)

Catalog Number: PKSM041299



**Note:** Centrifuge before opening to ensure complete recovery of vial contents.

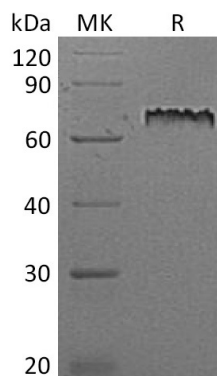
## Description

<b>Species</b>	Mouse
<b>Mol_Mass</b>	54.4 kDa
<b>Accession</b>	Q01705
<b>Bio-activity</b>	Not validated for activity

## Properties

<b>Purity</b>	> 95 % as determined by reducing SDS-PAGE.
<b>Endotoxin</b>	< 1.0 EU per µg of the protein as determined by the LAL method.
<b>Storage</b>	Generally, lyophilized proteins are stable for up to 12 months when stored at -20 to -80 °C. Reconstituted protein solution can be stored at 4-8°C for 2-7 days. Aliquots of reconstituted samples are stable at < -20°C for 3 months.
<b>Shipping</b>	This product is provided as lyophilized powder which is shipped with ice packs.
<b>Formulation</b>	Lyophilized from a 0.2 µm filtered solution of PBS, pH 7.4. Normally 5% - 8% trehalose, mannitol and 0.01% Tween 80 are added as protectants before lyophilization. Please refer to the specific buffer information in the printed manual.
<b>Reconstitution</b>	Please refer to the printed manual for detailed information.

## Data



## Background

Mouse Notch1 is a 300 kDa type I transmembrane glycoprotein and it functions as a receptor for membrane-bound ligands Jagged1, Jagged2 and Delta1 to regulate cell-fate determination. Mouse Notch1 is synthesized as a 2531 amino acid (aa) precursor that contains an 18 aa signal sequence, a 1707 aa extracellular domain (ECD) with 36 EGFl like repeats and three Lin12/notch repeats, a 21 aa transmembrane segment and a 785 aa cytoplasmic domain that contains six ankyrin repeats, a glutamine-rich domain and a PEST sequence. Notch1 may play an essential role in postimplantation development, probably in some aspect of cell specification and/or differentiation and may be involved in mesoderm development, somite formation and neurogenesis.

## For Research Use Only

A Reliable Research Partner in Life Science and Medicine  
Tel: 400-999-2100

Email: [techsupport@elabscience.cn](mailto:techsupport@elabscience.cn)

Web: [www.elabscience.cn](http://www.elabscience.cn)

Rev. V3.2