

SerpinB3 Monoclonal Antibody

catalog number: **AN200226P**

Note: Centrifuge before opening to ensure complete recovery of vial contents.

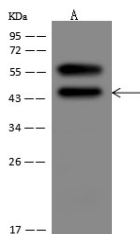
Description

Reactivity	Human
Immunogen	Recombinant Human SerpinB3 Protein
Host	Mouse
Isotype	IgG2a
Clone	5B2
Purification	Protein A
Buffer	0.2 µm filtered solution in PBS

Applications Recommended Dilution

WB	1:500-1:2000
-----------	--------------

Data



Western Blot with SerpinB3 Monoclonal Antibody at dilution of 1:500 dilution. Lane A: A431 Whole Cell Lysate, Lysates/proteins at 30 µg per lane.

Observed-MW:45 kDa

Calculated-MW:45 kDa

Preparation & Storage

Storage	This antibody can be stored at 2°C-8°C for one month without detectable loss of activity. Antibody products are stable for twelve months from date of receipt when stored at -20°C to -80°C. Preservative-Free. Avoid repeated freeze-thaw cycles.
Shipping	Ice bag

Background

Serpin B3, also known as squamous cell carcinoma antigen-1 (SCCA-1), is a member of the serpin superfamily of serine protease inhibitors. Serpin B3 belongs to the subgroup ovalbumin-related serpins which are involved in the regulation of apoptosis, inflammation, angiogenesis and embryogenesis. It may act as a papain-like cysteine protease inhibitor to modulate the host immune response against tumor cells. It also functions as an inhibitor of UV-induced apoptosis via suppression of the activity of c-Jun NH(2)-terminal kinase (JNK1).

For Research Use Only